

SECONDARY HEALTHCARE:

GOVERNMENT HOSPITALS

SALMANIYA MEDICAL COMPLEX (SMC)

Beds by Department and Specialty 1999-2003	Table 9.1, page 9-3
Bed Utilization 2003	Table 9.2, page 9-4
Bed Utilization by Department 1999-2003	Table 9.3, page 9-6
Re-Admissions 2003	Table 9.4, page 9-10
Admissions and Discharges by Department and Days of the Week 2003	Table 9.5, page 9-11
Admissions and Discharges by Days of the Week 2003	Figure 9.1, page 9-12
Discharges (Alive and Dead) by Age Groups, Nationality and Sex 2003	Table 9.6, page 9-13
Discharges (Alive and Dead) by Age Groups and Nationality 2003	Figure 9.2, page 9-15
Discharges (Alive and Dead) by Geographical Region 2003	Table 9.7, page 9-16
Discharges (Alive and Dead) by Source of Admission 2003	Table 9.8, page 9-17
Discharges (Alive and Dead) by Source of Admission 2003	Figure 9.3, page 9-18
Discharges (Alive and Dead) by Marital Status 2003	Table 9.9, page 9-19
Discharges (Alive and Dead) by Nationality 2003	Table 9.10, page 9-20
Discharges (Alive and Dead) by Diagnosis, Nationality and Sex 2003	Table 9.11, page 9-21
Discharges (Alive and Dead) by Diagnosis and Age Groups 2003	Table 9.12, page 9-23
Discharges by Discharge Status, Nationality and Department 2003	Table 9.13, page 9-25
Discharges, Days of Care and Average Length of Stay by Principal Diagnosis, Sex and Age Groups 2003	Table 9.14, page 9-26
Discharges by The Ten Leading Diagnosis 2003	Figure 9.4, page 9-39
In-Patient Days by Operation Procedures and Discharged Department 2003	Table 9.15, page 9-40
Operations by Type of Anaesthesia 1999-2003	Table 9.16, page 9-41
Deaths by Cause of Death , Length of Stay, Nationality and Sex 2003	Table 9.17, page 9-42
Deaths by Cause of Death 2003	Figure 9.5, page 9-51
Out-Patient Visits by Department 1999-2003	Table 9.18, page 9-52
Out-Patient Visits by Department 2003	Figure 9.6, page 9-53
Laboratory Tests by Source of Specimen 2003	Table 9.19, page 9-54
Radiology Procedures 2003	Table 9.20, page 9-55
Special Care Baby Unit (Discharges by Month and Sex) 2003	Table 9.21, page 9-57
Discharges (Mothers / Special Care Baby Unit) by Geographical Region 2003	Table 9.22, page 9-58

الرعاية الصحية الثانوية :

المستشفيات الحكومية

مجمع السلمانية الطبي

عدد الأسرة حسب القسم والتخصص 2003-1999
قياس استخدام الأسرة 2003
قياس استخدام الأسرة حسب القسم 2003-1999
عدد مرات دخول المرضى 2003
الدخول والخروج حسب القسم العلاجي وأيام الأسبوع 2003
الدخول والخروج حسب أيام الأسبوع 2003
الخروج (أحياء وأموات) حسب فئات السن والجنسية والنوع 2003
الخروج (أحياء وأموات) حسب فئات السن والجنسية 2003
الخروج (أحياء وأموات) حسب المنطقة الجغرافية 2003
الخروج (أحياء وأموات) حسب مصدر الدخول 2003
الخروج (أحياء وأموات) حسب مصدر الدخول 2003
الخروج (أحياء وأموات) حسب الحالة الاجتماعية 2003
الخروج (أحياء وأموات) حسب الجنسية 2003
الخروج (أحياء وأموات) حسب التشخيص الرئيسي والجنسية والنوع 2003
الخروج (أحياء وأموات) حسب التشخيص وفئات السن 2003
الخروج حسب حالة الخروج والجنسية والقسم العلاجي 2003
الخروج وأيام الرعاية ومتوسط مدة الإقامة حسب التشخيص الرئيسي والنوع وفئات السن 2003
الخروج حسب أعلى عشرة تشخيصات رئيسية 2003
أيام المرض حسب الإجراءات الجراحية والقسم العلاجي عند الخروج 2003
العمليات الجراحية حسب نوع التخدير 2003-1999
الوفيات حسب سبب الوفاة ومدّة الإقامة والجنسية والنوع 2003
الوفيات حسب سبب الوفاة 2003
زيارات العيادات الخارجية حسب القسم 2003 - 1999
زيارات العيادات الخارجية حسب القسم 2003
عدد التحاليل المختبرية حسب مصدر العينة 2003
إجراءات قسم الأشعة 2003
وحدة العناية الخاصة بالمواليد (المرخصين حسب الشهر والنوع) 2003
الخروج (أمهات / أطفال العناية الخاصة) حسب المنطقة الجغرافية 2003

<i>Department</i>	<i>2003</i>	<i>2002</i>	<i>2001</i>	<i>2000</i>	<i>1999</i>		
Medical	258	256	214	243	250		
Internal Medicine	205	205	165	194	203		
Chest/Respiratory	17	17	17	17	17		
Cardiology	20	20	20	20	20		
Cardiac Care Unit (CCU)	16	14	12	12	10		
Surgical	164	164	164	160	154		
General Surgery	142	142	142	138	132		
Paediatrics Surgery	22	22	22	22	22		
Orthopedic Surgery & Fracture	58	58	58	58	58		
Plastic Surgery & Burns	21	21	21	23	23		
Plastic Surgery	4	4	4	6	6		
Burns	17	17	17	17	17		
Paediatrics *	92	95	95	95	95		*
General Paediatrics	69	72	72	72	72		
Infectious Diseases	23	23	23	23	23		
Special Care Baby Unit	45	45	45	45	45		
Obstetrics & Gynecology	156	156	156	166	166		
Obstetrics *	80	80	80	80	80 *		
Gynecology	76	76	76	86	86		
E.N.T	35	35	38	38	38		
Ophthalmology	35	35	44	44	44		
Dental	4	4	-	2	2		
Intensive Care Unit (ICU)	11	11	11	11	9		
Decanter Ward (12) *	NA	NA	18	NA	NA		* 12
Infectious Diseases Ward (13) *	NA	NA	17	NA	NA		13
Other	40	40	52	30	30		
Day Case Unit	18	18	18	18	18		
Private Ward	22	22	22	12	12		
Short Stay Beds (ward 62) *	NA	NA	12	NA	NA *	62	
Total *	874	875	888	870	869		*

* Refer to Conventions used in the report .

SCBU	Total	¹											Description
		Private Ward ¹	Intensive Care Unit	Dental	Ophthalmology	E.N.T.	Paediatrics	Obs. & Gyne.	Plastic Surg. & Burn	Orthop Surg. & Fracture	Surgery	Medical	
1,001	41,384	604	204	325	1,296	3,206	4,452	11,442	379	2,082	6,615	11,383	Total admissions
982	41,379	1,228	122	324	1,298	3,190	4,441	11,433	388	2,083	6,691	11,409	Total discharges
45	856	22	11	4	35	35	92	156	21	58	164	258	No. of beds
16,425	312,440	8,030	4,015	1,460	12,775	12,775	33,580	56,940	7,665	21,170	59,860	94,170	Bed days available
11,068	253,968	6,345	1,751	1,605	8,018	10,966	25,655	41,574	4,433	20,017	49,714	90,235	Patient-days overnight
28	751	11	4	6	10	68	118	236	14	23	104	168	> Patient days < 1 day
11,096	254,719	6,356	1,755	1,611	8,028	11,034	25,773	41,810	4,447	20,040	49,818	90,403	Total Patient days
67.6	81.5	79.2	43.7	110.3	62.8	86.4	76.8	73.4	58.0	94.7	83.2	96.0	Bed occupancy rate
21.8	48.3	55.8	11.1	81.0	37.1	91.1	48.3	73.3	18.5	35.9	40.8	44.2	Turnover rate

¹ Private ward 410, 413: data in this column already counted within the related departments except number of beds & bed days available .

()

: 413 , 410

¹

SCBU	Total	1											Description
		Private Ward ¹	Intensive Care Unit	Dental	Ophthalmology	E.N.T.	Paediatrics	Obs. & Gyne.	Plastic Surg. & Burn	Orthop Surg. & Fracture	Surgery	Medical	
5.4	1.4	1.4	18.5	-0.5	3.7	0.5	1.8	1.3	8.3	0.5	1.5	0.3	² Turnover interval ²
2.7	113.1	1.7	0.6	0.9	3.6	8.8	12.2	31.3	1.0	5.7	18.1	31.2	Average daily admission
2.7	113.1	3.4	0.3	0.9	3.6	8.7	12.2	31.3	1.1	5.7	18.3	31.3	Average daily discharge
11.3	6.2	5.2	14.4	5.0	6.2	3.5	5.8	3.7	11.5	9.6	7.4	7.9	Average length of stay

Note: The total excludes the Day Case Unit .

² Turnover Interval: Negative sign indicate that the concerned department is utilising more beds than allocated .

2

<i>Department / Unit</i>	<i>2003</i>	<i>2002</i>	<i>2001</i>	<i>2000</i>	<i>1999</i>	<i>/</i>
Medical						
Total Admissions	11,383	10,097	9,102	8,709	9,042	
Total Discharges	11,409	10,124	9,070	8,667	9,023	
No.of beds	258	256	214	243	250	
Total Patient days	90,403	84,329	81,269	79,174	78,953	
Bed occupancy rate	96.0	90.2	103.8	89.0	86.5	
Average length of stay	7.9	8.3	9.0	9.1	8.8	
Surgical *						*
Total Admissions	6,615	7,109	7,291	6,860	7,168	
Total Discharges	6,691	7,163	7,348	6,961	7,233	
No.of beds	164	164	164	160	154	
Total Patient days	49,818	50,951	55,111	56,875	57,311	
Bed occupancy rate	83.2	85.1	91.8	97.4	102.0	
Average length of stay	7.4	7.1	7.5	8.2	7.9	
Paediatrics						
Total Admissions	4,452	4,564	4,211	4,462	4,266	
Total Discharges	4,441	4,589	4,224	4,486	4,299	
No.of beds	92	95	95	95	95	
Total Patient days	25,773	24,304	24,155	24,816	22,664	
Bed occupancy rate	76.8	70.1	69.5	71.6	65.4	
Average length of stay	5.8	5.3	5.7	5.5	5.3	

Note: Table 9.5 indicates admissions and discharges by department where as this table provides information by department and it's units.

* The 2001 figures only Include Dental patients, refer to Conventions used in the report

9.5

2001 *

<i>Department / Unit</i>	<i>2003</i>	<i>2002</i>	<i>2001</i>	<i>2000</i>	<i>1999</i>	<i>/</i>
Obstetrics/Gynecology						
Total Admissions	11,442	11,367	10,882	11,157	10,890	
Total Discharges	11,433	11,372	10,863	11,134	10,911	
No.of beds	156	156	156	166	166	
Total Patient days	41,810	44,423	44,497	46,949	46,895	
Bed occupancy rate	73.4	78.0	77.9	77.3	77.4	
Average length of stay	3.7	3.9	4.1	4.2	4.3	
E.N.T						
Total Admissions	3,206	3,413	3,370	3,235	3,055	
Total Discharges	3,190	3,406	3,357	3,218	3,051	
No.of beds	35	35	38	38	38	
Total Patient days	11,034	11,052	11,243	10,763	10,630	
Bed occupancy rate	86.4	86.5	80.8	77.4	76.6	
Average length of stay	3.5	3.2	3.3	3.3	3.5	
Ophthalmology						
Total Admissions	1,296	1,320	1,385	1,354	1,220	
Total Discharges	1,298	1,313	1,371	1,338	1,226	
No.of beds	35	35	44	44	44	
Total Patient days	8,028	8,764	9,094	9,334	9,142	
Bed occupancy rate	62.8	68.6	56.5	58.0	56.9	
Average length of stay	6.2	6.7	6.6	7.0	7.5	

<i>Department / Unit</i>	<i>2003</i>	<i>2002</i>	<i>2001</i>	<i>2000</i>	<i>1999</i>	<i>/</i>
Orthopedic Surgery & Fracture						
Admissions	2,082	1,997	2,021	1,903	1,811	
Discharges	2,083	2,016	2,010	1,901	1,814	
No.of beds	58	58	58	58	58	
Total Patient days	20,040	17,824	20,385	18,960	18,220	
Bed occupancy rate	94.7	84.0	96.0	89.6	86.1	
Average length of stay	9.6	8.8	10.1	10.0	10.0	
Plastic Surgery & Burns						
Total Admissions	379	383	347	280	413	
Total Discharges	388	390	369	288	425	
No.of beds	21	21	21	23	23	
Total Patient days	4,447	3,749	4,768	4,025	4,082	
Bed occupancy rate	58.0	48.9	62.0	47.8	48.6	
Average length of stay	11.5	9.6	12.9	14.0	9.6	
Intensive Care Unit						
Total Admissions	204	184	173	159	109	
Total Discharges	122	114	82	66	66	
No.of beds	11	11	11	11	9	
Total Patient days	1,755	1,565	1,150	754	958	
Bed occupancy rate	43.7	39.0	28.6	18.7	29.2	
Average length of stay	14.4	13.7	14.0	11.4	14.5	

<i>Department / Unit</i>	<i>2003</i>	<i>2002</i>	<i>2001</i>	<i>2000</i>	<i>1999</i>	<i>/</i>
Dental *						*
Total Admissions	325	259	245	268	275	
Total Discharges	324	253	253	267	277	
No.of beds	4	4	NA	2	2	
Total Patient days	1,611	1,403	NA	1,268	1,329	
Bed occupancy rate	110.3	96.1	NA	173.2	182.1	
Average length of stay	5.0	5.5	NA	4.7	4.8	
Private ward						
Total Admissions	604	687	747	333	363	
Total Discharges	1,228	1,330	1,323	387	436	
No.of beds	22	22	22	12	12	
Total Patient days	6,356	6,060	6,116	2,324	2,805	
Bed occupancy rate	79.2	75.5	76.0	52.9	64.0	
Average length of stay	5.2	4.6	4.6	6.0	6.4	
Total Admissions	41,384	40,693	38,782	38,387	38,249	
Total Discharges	41,379	40,740	38,694	38,326	38,325	
No.of beds	856	857	823	852	851	
Total Patient days	254,719	248,364	251,672	252,918	250,184	
Bed occupancy rate	81.5	79.4	83.6	81.1	80.5	
Average length of stay	6.2	6.1	6.5	6.6	6.5	
Special care baby unit						
Total Admissions	1,001	905	864	828	878	
Total Discharges	982	896	839	787	861	
No.of beds	45	45	45	45	45	
Total Patient days	11,096	11,258	11,720	19,817	11,169	
Bed occupancy rate	67.6	68.5	71.2	65.7	68.0	
Average length of stay	11.3	12.6	14.0	13.7	13.0	

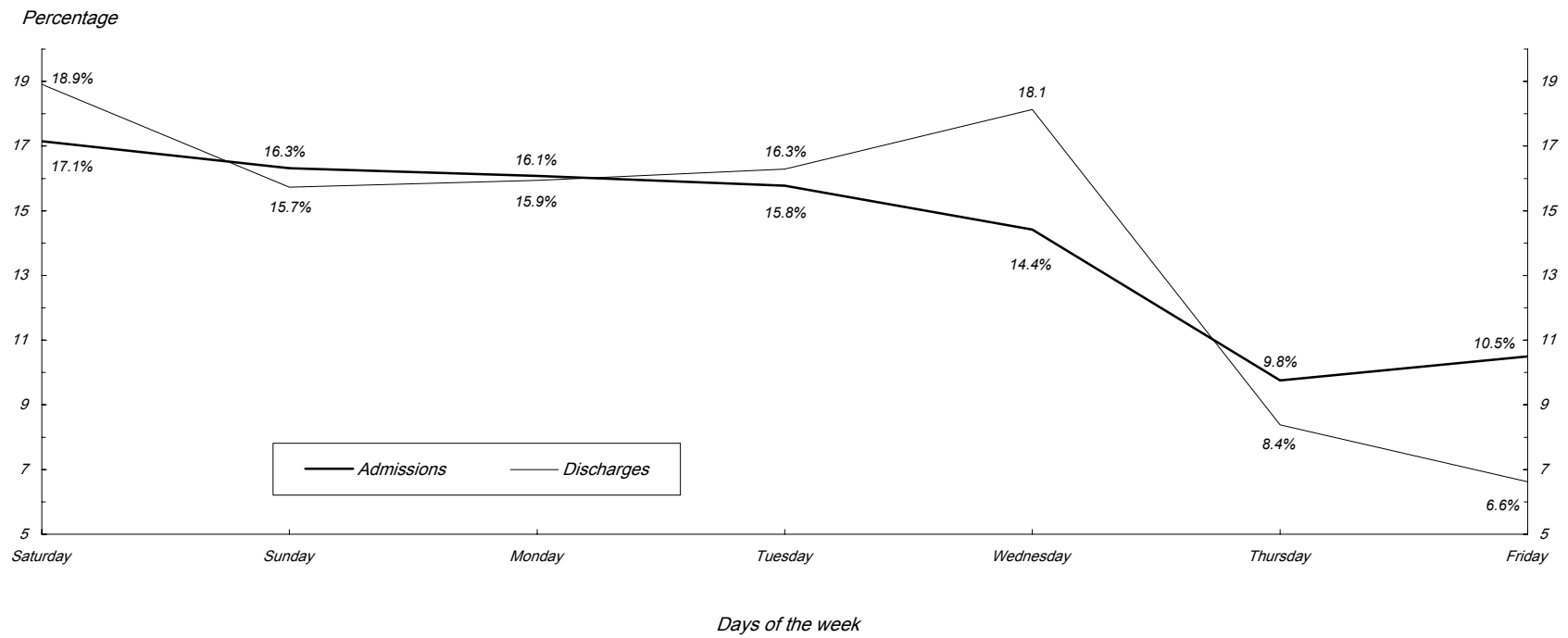
* Refer to the Conventions used in the report .

*

<i>Admission Classification</i>	<i>Total</i>		
No previous admission	32,231		
Same condition <= 3 months	2,898		3
Same condition > 3 months	787	3	
Other condition <= 3 months	4,733		3
Other condition > 3 months	1,712	3	

Department	Total		Fri		Thurs		Wed		Tues		Mon		Sun		Sat		
	Disch.	Adm.	Disch.	Adm.	Disch.	Adm.	Disch.	Adm.	Disch.	Adm.	Disch.	Adm.	Disch.	Adm.	Disch.	Adm.	
Medical	11,409	11,383	472	1,288	679	1,414	2,228	1,673	1,787	1,737	1,872	1,714	2,088	1,707	2,283	1,850	
Surgical	6,691	6,615	524	596	537	451	1,172	1,013	1,069	1,052	1,171	1,089	966	1,100	1,252	1,314	
Ophthalmology	1,298	1,296	27	43	66	80	226	179	313	372	244	215	148	198	274	209	
E.N.T.	3,190	3,206	247	189	241	140	680	584	596	528	530	593	397	655	499	517	
Dental	324	325	9	17	34	20	64	27	43	44	63	71	39	57	72	89	
Pediatrics	4,441	4,452	342	562	400	527	752	641	750	580	755	756	620	702	822	684	
Orthopedic Surgery & Fracture	2,083	2,082	64	148	148	160	438	330	341	318	318	349	351	386	423	391	
Plastic Surgery & Burns	388	379	24	32	24	26	76	78	40	42	81	67	51	44	92	90	
Obstetrics & Gynecology	11,433	11,442	1,018	1,444	1,325	1,189	1,843	1,416	1,780	1,814	1,541	1,773	1,838	1,882	2,088	1,924	
ICU	122	204	14	27	14	31	23	27	21	41	20	27	12	23	18	28	
Total	41,379	41,384	2,741	4,346	3,468	4,038	7,502	5,968	6,740	6,528	6,595	6,654	6,510	6,754	7,823	7,096	
Special Care Baby Unit	982	1,001	100	136	71	131	158	148	184	156	140	142	164	132	156	156	
Grand Total	42,361	42,385	2,841	4,482	3,539	4,169	7,660	6,116	6,924	6,684	6,735	6,796	6,674	6,886	7,988	7,252	

2003
Admissions and Discharges By Days of the Week 2003



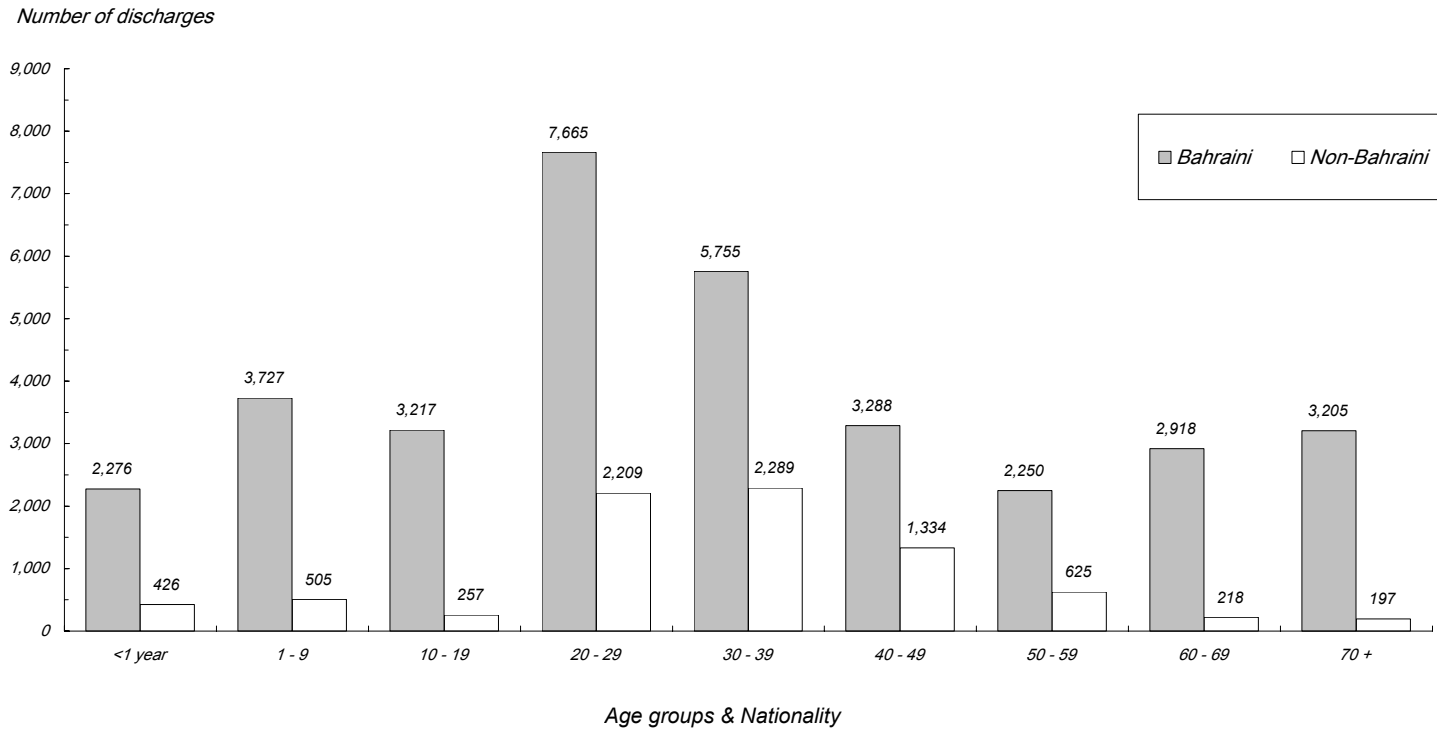
Refer: Table 9.5

9.5 :

<i>Total</i>			<i>Non-Bahraini</i>			<i>Bahraini</i>				
<i>Total</i>	<i>Female</i>	<i>Male</i>	<i>Total</i>	<i>Female</i>	<i>Male</i>	<i>Total</i>	<i>Female</i>	<i>Male</i>		() <i>Age Group (Years)</i>
2,605	1,110	1,495	411	173	238	2,194	937	1,257	Alive	<1 year
97	46	51	15	5	10	82	41	41	Dead	
2,702	1,156	1,546	426	178	248	2,276	978	1,298	Total	
4,210	1,714	2,496	500	204	296	3,710	1,510	2,200	Alive	1 - 9
22	11	11	5	1	4	17	10	7	Dead	
4,232	1,725	2,507	505	205	300	3,727	1,520	2,207	Total	
3,459	1,674	1,785	257	145	112	3,202	1,529	1,673	Alive	10 - 19
15	7	8	-	-	-	15	7	8	Dead	
3,474	1,681	1,793	257	145	112	3,217	1,536	1,681	Total	
9,841	7,097	2,744	2,199	1,469	730	7,642	5,628	2,014	Alive	20 - 29
33	15	18	10	7	3	23	8	15	Dead	
9,874	7,112	2,762	2,209	1,476	733	7,665	5,636	2,029	Total	
7,998	5,512	2,486	2,275	1,284	991	5,723	4,228	1,495	Alive	30 - 39
46	21	25	14	3	11	32	18	14	Dead	
8,044	5,533	2,511	2,289	1,287	1,002	5,755	4,246	1,509	Total	
4,545	2,514	2,031	1,314	442	872	3,231	2,072	1,159	Alive	40 - 49
77	36	41	20	6	14	57	30	27	Dead	
4,622	2,550	2,072	1,334	448	886	3,288	2,102	1,186	Total	
2,770	1,219	1,551	598	130	468	2,172	1,089	1,083	Alive	50 - 59
105	50	55	27	8	19	78	42	36	Dead	
2,875	1,269	1,606	625	138	487	2,250	1,131	1,119	Total	

<i>Total</i>			<i>Non-Bahraini</i>			<i>Bahraini</i>				
<i>Total</i>	<i>Female</i>	<i>Male</i>	<i>Total</i>	<i>Female</i>	<i>Male</i>	<i>Total</i>	<i>Female</i>	<i>Male</i>		() <i>Age Group (Years)</i>
2,912	1,430	1,482	204	69	135	2,708	1,361	1,347	Alive	60 - 69
224	112	112	14	5	9	210	107	103	Dead	
3,136	1,542	1,594	218	74	144	2,918	1,468	1,450	Total	
2,943	1,348	1,595	169	62	107	2,774	1,286	1,488	Alive	70 +
459	214	245	28	5	23	431	209	222	Dead	
3,402	1,562	1,840	197	67	130	3,205	1,495	1,710	Total	
41,283	23,618	17,665	7,927	3,978	3,949	33,356	19,640	13,716	Alive	Total
1,078	512	566	133	40	93	945	472	473	Dead	
42,361	24,130	18,231	8,060	4,018	4,042	34,301	20,112	14,189	Total	

2003 ()
Discharges (Alive and Dead) By Age Groups and Nationality 2003



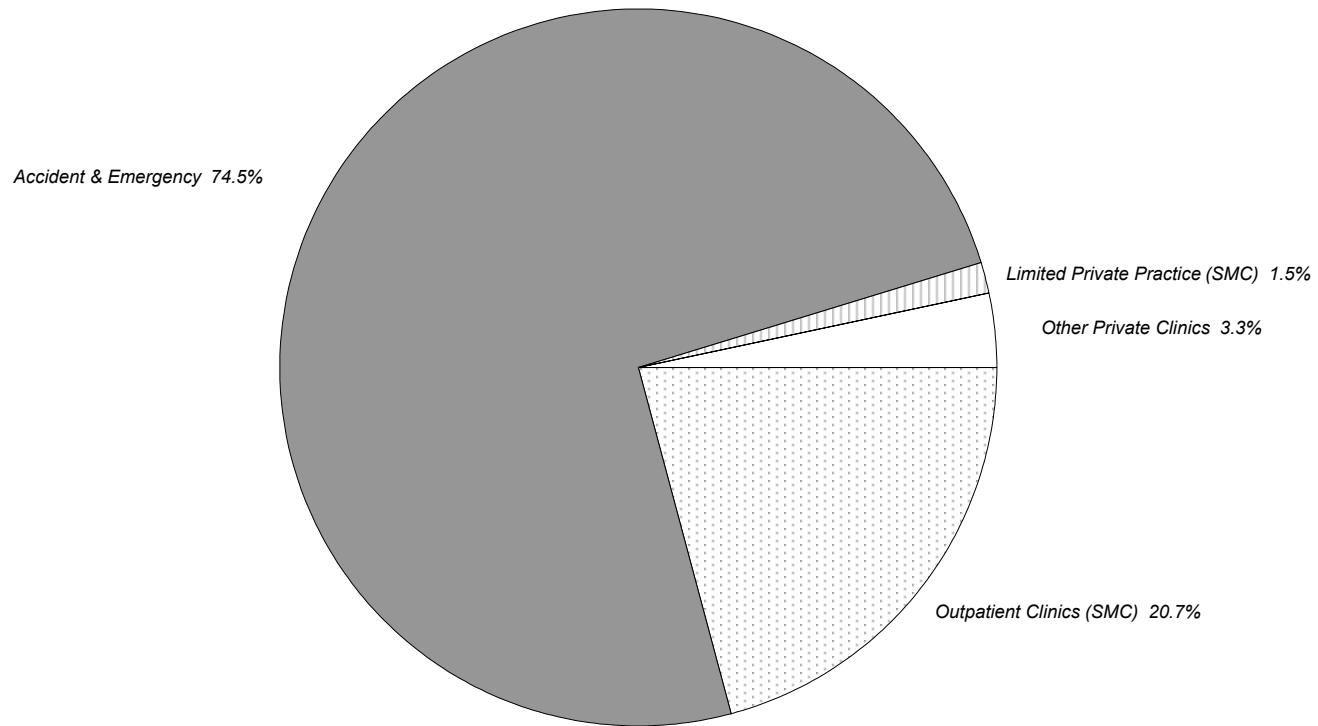
Refer: Table 9.6

9.6 :

Region	Total		Dead		Alive	
	%	No.	%	No.	%	No.
Hidd	1.7	704	2.3	25	1.6	679
Muharraq	15.0	6,350	20.8	224	14.8	6,126
Manama	21.3	9,010	24.7	266	21.2	8,744
Jidhafs	11.1	4,718	11.1	120	11.1	4,598
Northern Region	7.1	2,987	6.8	73	7.1	2,914
Sitra	8.7	3,687	6.8	73	8.8	3,614
Central Region	8.9	3,761	7.0	75	8.9	3,686
Isa Town	7.3	3,102	6.4	69	7.3	3,033
Riffa	6.3	2,672	5.9	64	6.3	2,608
Western Region	5.2	2,221	4.5	48	5.3	2,173
Hamad Town	6.8	2,881	3.1	33	6.9	2,848
Undetermined	0.6	268	0.7	8.0	0.6	260
Total	100.0	42,361	100.0	1,078	100.0	41,283

Source of Admission	Total		Dead		Alive		
	%	No.	%	No.	%	No.	
Outpatient Clinics (SMC)	20.7	8,784	7.5	81	21.1	8,703	()
Accident & Emergency	74.5	31,549	91.8	990	74.0	30,559	
Limited Private Practice (SMC)	1.5	629	0.4	4	1.5	625	()
Other Private Clinics	3.3	1,399	0.3	3	3.4	1,396	()
Total	100.0	42,361	100.0	1,078	100.0	41,283	

2003 ()
Discharges (Alive and Dead) By Source of Admission 2003



Refer: Table 9.8

9.8 :

<i>Marital Status</i>	<i>Total</i>		<i>Dead</i>		<i>Alive</i>	
	<i>%</i>	<i>No.</i>	<i>%</i>	<i>No.</i>	<i>%</i>	<i>No.</i>
Single	39.4	16,697	26.9	290	39.7	16,407
Married	55.6	23,555	51.9	560	55.7	22,995
Widowed	4.1	1,755	18.6	200	3.8	1,555
Divorced	0.6	273	1.9	21	0.6	252
Undetermined	0.2	81	0.6	7	0.2	74
Total	100.0	42,361	100.0	1,078	100.0	41,283

Nationality	Total		Dead		Alive		
	%	No.	%	No.	%	No.	
Bahraini	81.0	34,301	87.7	945	80.8	33,356	
Indian	7.4	3,128	3.5	38	7.5	3,090	
Pakistani	2.7	1,140	1.5	16	2.7	1,124	
Other Arab	2.7	1,141	1.8	19	2.7	1,122	
Bangladeshi	1.7	709	1.4	15	1.7	694	
Philippino	0.9	381	0.6	7	0.9	374	
Saudi Arabian	1.0	405	0.9	10	1.0	395	
Iranian	0.4	175	1.2	13	0.4	162	
Srilankan	0.7	288	0.1	1	0.7	287	
Other G.C.C.	0.5	221	0.6	7	0.5	214	
European	0.3	120	0.3	3	0.3	117	
Other Asians	0.4	189	0.3	3	0.5	186	
African (non Arab)	0.2	85	0.1	1	0.2	84	()
Other Nationalities	0.2	78	-	-	0.2	78	
Total	100.0	42,361	100.0	1,078	100.0	41,283	

Grand Total	Total				Non-Bahraini				Bahraini				Principal Diagnosis	ICD-10 Code
	Female		Male		Female		Male		Female		Male			
	Dead	Alive	Dead	Alive	Dead	Alive	Dead	Alive	Dead	Alive	Dead	Alive		
1,712	140	587	131	854	7	121	10	246	133	466	121	608	Certain infectious & parasitic diseases	A00-B99
1,519	75	734	90	620	6	116	10	96	69	618	80	524	Neoplasms	C00-D49
2,767	9	1,150	8	1,600	-	37	1	50	9	1,113	7	1,550	Diseases of the blood and blood-forming organs and certain disorders involving the immune mechanism	D50-D89
1,157	11	602	8	536	-	59	-	109	11	543	8	427	() Endocrine, nutritional and metabolic diseases	E00-E90
104	-	24	-	80	-	4	-	30	-	20	-	50	Mental and behavioural disorders	F00-F99
686	12	333	8	333	-	39	3	58	12	294	5	275	Diseases of the nervous system	G00-G99
1,189	-	541	-	648	-	46	-	113	-	495	-	535	Diseases of the eye and adnexa	H00-H59
407	-	173	-	234	-	15	-	35	-	158	-	199	Diseases of the ear and mastoid process	H60-H95
3,593	116	1,322	122	2,033	12	140	29	623	104	1,182	93	1,410	Diseases of the circulatory system	I00-I99
4,326	42	1,848	61	2,375	5	177	10	343	37	1,671	51	2,032	Diseases of the respiratory system	J00-J99
3,530	26	1,334	39	2,131	1	191	7	625	25	1,143	32	1,506	Diseases of the digestive system	K00-K99
665	1	247	-	417	-	45	-	120	1	202	-	297	Diseases of the skin and subcutaneous tissue	L00-L99

Grand Total	Total				Non-Bahraini				Bahraini				Principal Diagnosis	ICD-10 Code
	Female		Male		Female		Male		Female		Male			
	Dead	Alive	Dead	Alive	Dead	Alive	Dead	Alive	Dead	Alive	Dead	Alive		
1,159	-	466	1	692	-	34	-	106	-	432	1	586	Diseases of the musculoskeletal system and connective tissue	M00-M99
2,271	9	1,324	13	925	-	212	-	204	9	1,112	13	721	Diseases of the genitourinary system	N00-N99
9,978	2	9,976	-	-	-	2,200	-	-	2	7,776	-	-	Pregnancy, childbirth and the puerperium	O00-O99
1,296	30	540	29	697	4	90	7	114	26	450	22	583	Certain conditions originating in the perinatal period	P00-P99
525	8	189	9	319	1	29	1	35	7	160	8	284	() Congenital malformations, deformations and chromosomal abnormalities	Q00-Q99
1,602	19	726	25	832	2	117	6	224	17	609	19	608	Symptoms, signs and abnormal clinical and laboratory findings not elsewhere classified	R00-R99
2,948	12	946	20	1,970	2	196	9	754	10	750	11	1,216	Injury, poisoning and certain other consequences of external causes	S00-T98
13	-	6	-	7	-	2	-	4	-	4	-	3	External causes of morbidity and mortality	V00-Y98
911	-	550	2	359	-	108	-	59	-	442	2	300	Factors influencing health status and contact with health services	Z00-Z99
3	-	-	-	3	-	-	-	1	-	-	-	2	Other Diagnoses	Others
42,361	512	23,618	566	17,665	40	3,978	93	3,949	472	19,640	473	13,716	Total	

Total	70+	60-69	50-59	40-49	30-39	20-29	10-19	1-9	< 1 yr		Principal Diagnosis	ICD-10 Code
1,441	130	75	44	100	141	203	119	435	194	Alive	Certain infectious & parasitic diseases	A00-B99
271	164	53	14	17	6	7	3	3	4	Dead		
1,354	151	268	257	256	173	73	75	87	14	Alive	Neoplasms	C00-D49
165	54	37	32	24	8	2	4	4	-	Dead		
2,750	22	29	20	183	431	937	742	353	33	Alive	Diseases of the blood and blood-forming organs and certain disorders involving the immune mechanism	D50-D89
17	1	4	-	2	5	2	2	1	-	Dead		
1,138	191	169	177	168	105	93	115	75	45	Alive	() Endocrine, nutritional and metabolic diseases	E00-E90
19	14	4	1	-	-	-	-	-	-	Dead		
104	9	8	21	28	12	18	7	1	-	Alive	Mental and behavioural disorders	F00-F99
-	-	-	-	-	-	-	-	-	-	Dead		
666	66	48	64	97	73	89	77	117	35	Alive	Diseases of the nervous system	G00-G99
20	3	7	5	-	1	1	1	1	1	Dead		
1,189	309	331	188	119	71	68	39	57	7	Alive	Diseases of the eye and adnexa	H00-H59
-	-	-	-	-	-	-	-	-	-	Dead		
407	7	15	23	50	45	44	37	159	27	Alive	Diseases of the ear and mastoid process	H60-H95
-	-	-	-	-	-	-	-	-	-	Dead		
3,355	798	756	665	536	342	177	40	29	12	Alive	Diseases of the circulatory system	I00-I99
238	110	59	29	18	10	4	1	1	6	Dead		
4,223	332	268	197	281	391	607	506	1,302	339	Alive	Diseases of the respiratory system	J00-J99
103	47	22	6	5	3	7	1	5	7	Dead		
3,465	256	278	315	568	696	657	334	235	126	Alive	Diseases of the digestive system	K00-K99
65	33	15	9	2	-	2	-	2	2	Dead		
664	41	45	61	93	90	131	91	88	24	Alive	Diseases of the skin and subcutaneous tissue	L00-L99
1	1	-	-	-	-	-	-	-	-	Dead		

Total	70+	60-69	50-59	40-49	30-39	20-29	10-19	1-9	< 1 yr		Principal Diagnosis	ICD-10 Code
1,158	103	132	157	219	223	163	93	66	2	Alive	Diseases of the musculoskeletal system and connective tissue	M00-M99
1	1	-	-	-	-	-	-	-	-	Dead		
2,249	205	185	247	524	417	391	148	101	31	Alive	Diseases of the genitourinary system	N00-N99
22	11	6	3	-	1	-	1	-	-	Dead		
9,976	-	-	7	682	3,849	5,124	314	-	-	Alive	Pregnancy, childbirth and the puerperium	O00-O99
2	-	-	-	-	1	-	1	-	-	Dead		
1,237	-	-	-	-	2	3	2	2	1,228	Alive	Certain conditions originating in the perinatal period	P00-P99
59	-	1	-	-	-	-	-	-	58	Dead		
508	1	2	3	6	22	38	41	196	199	Alive	(Congenital malformations, deformations and chromosomal abnormalities	Q00-Q99
17	-	-	-	-	-	-	-	1	16	Dead		
1,558	128	126	128	213	214	217	176	233	123	Alive	Symptoms, signs and abnormal clinical and laboratory findings not elsewhere classified	R00-R99
44	15	13	3	2	4	2	-	2	3	Dead		
2,916	169	140	153	339	525	586	428	500	76	Alive	Injury, poisoning and certain other consequences of external causes	S00-T98
32	4	3	3	7	7	5	1	2	-	Dead		
13	-	1	1	-	2	1	2	4	2	Alive	External causes of morbidity and mortality	V00-Y98
-	-	-	-	-	-	-	-	-	-	Dead		
909	24	36	42	82	174	221	73	169	88	Alive	Factors influencing health status and contact with health services	Z00-Z99
2	1	-	-	-	-	1	-	-	-	Dead		
3	1	-	-	1	-	-	-	1	-	Alive	Other Diagnoses	Others
-	-	-	-	-	-	-	-	-	-	Dead		
41,283	2,943	2,912	2,770	4,545	7,998	9,841	3,459	4,210	2,605	Alive	Total	
1,078	459	224	105	77	46	33	15	22	97	Dead		
42,361	3,402	3,136	2,875	4,622	8,044	9,874	3,474	4,232	2,702	Total		

<i>Total</i>		<i>Total</i>	<i>Dental</i>	<i>ICU</i>	<i>Radio- logy</i>	<i>Ophthal- mology</i>	<i>E.N.T.</i>	<i>Paed- iatrics</i>	<i>Obs. & Gyne.</i>	<i>Plastic Surg. Burns</i>	<i>Orthop & Fracture</i>	<i>Surgical</i>	<i>Medical</i>	<i>Nationality</i>	<i>Discharge Status</i>
	<i>SCBU</i>														
33,142	717	32,425	250	3	1	1,099	2,892	3,883	8,865	269	1,527	5,115	8,521	Bah	
7,881	190	7,691	74	1	-	198	295	503	2,511	113	539	1,501	1,956	Non-Bah	Routine discharge
41,022	907	40,115	324	4	1	1,297	3,187	4,386	11,375	382	2,066	6,616	10,477	Total	home
117	-	117	-	1	-	1	2	9	41	-	7	5	51	Bah	
19	-	19	-	-	-	-	1	-	2	2	-	3	11	Non-Bah	Left against
136	-	136	-	1	-	1	3	9	43	2	7	8	62	Total	medical advise
160	30	130	-	7	-	-	-	7	1	-	-	5	110	Bah	48
29	6	23	-	6	-	-	-	1	-	-	-	4	12	Non-Bah	Died before
189	36	153	-	13	-	-	-	8	1	-	-	9	122	Total	48 hours
785	32	753	-	83	-	-	-	33	1	-	8	48	580	Bah	48
104	7	97	-	21	-	-	-	4	-	4	1	7	60	Non-Bah	Died after 48
889	39	850	-	104	-	-	-	37	1	4	9	55	640	Total	hours
97	-	97	-	-	-	-	-	1	8	-	1	3	84	Bah	
27	-	27	-	-	-	-	-	-	4	-	-	-	23	Non-Bah	Transferred to
124	-	124	-	-	-	-	-	1	12	-	1	3	107	Total	other hospitals
1	-	1	-	-	-	-	-	-	-	-	-	-	1	Bah	
-	-	-	-	-	-	-	-	-	-	-	-	-	-	Non-Bah	
1	-	1	-	-	-	-	-	-	-	-	-	-	1	Total	Undetermined
34,302	779	33,523	250	94	1	1,100	2,894	3,933	8,916	269	1,543	5,176	9,347	Bah	
8,060	203	7,857	74	28	-	198	296	508	2,517	119	540	1,515	2,062	Non-Bah	Total
42,362	982	41,380	324	122	1	1,298	3,190	4,441	11,433	388	2,083	6,691	11,409	Total	

Male						Female						Grand Total	DISCH DOC ALS	Principal Diagnosis	ICD10 Code
Age Groups						Age Groups									
Total	65+	45-64	15-44	1-14	1>	Total	65+	45-64	15-44	1-14	1>				
NA	NA	NA	NA	NA	NA	2,778	-	8	2,769	1	-	2,778	DISCH		O80
NA	NA	NA	NA	NA	NA	7,677	-	39	7,636	2	-	7,677	DOC	Single spontaneous delivery	
NA	NA	NA	NA	NA	NA	2.8	-	4.9	2.8	2.0	-	2.8	ALS		
1,422	2	18	1,098	302	2	974	-	50	751	171	2	2,396	DISCH		D57
7,839	11	105	6,186	1,530	7	5,355	-	398	4,121	832	4	13,194	DOC	Sickle-cell disorders	
5.5	5.5	5.8	5.6	5.1	3.5	5.5	-	8.0	5.5	4.9	2.0	5.5	ALS		
NA	NA	NA	NA	NA	NA	1,433	-	26	1,407	-	-	1,433	DISCH	-	O03
NA	NA	NA	NA	NA	NA	2,634	-	54	2,580	-	-	2,634	DOC	Spontaneous abortion	
NA	NA	NA	NA	NA	NA	1.8	-	2.1	1.8	-	-	1.8	ALS		
706	-	5	132	569	-	556	-	4	139	413	-	1,262	DISCH		J35
2,420	-	22	598	1,800	-	1,878	-	22	568	1,288	-	4,298	DOC	Chronic diseases of tonsils and adenoids	
3.4	-	4	5	3	-	3.4	-	5.5	4.1	3.1	-	3.4	ALS		
NA	NA	NA	NA	NA	NA	1,073	-	-	1,073	-	-	1,073	DISCH		O70
NA	NA	NA	NA	NA	NA	2,499	-	-	2,499	-	-	2,499	DOC	Perineal laceration during delivery	
NA	NA	NA	NA	NA	NA	2.3	-	-	2.3	-	-	2.3	ALS		
420	29	28	74	216	73	349	40	21	72	150	66	769	DISCH		A09
1,332	167	101	254	588	222	1,228	206	98	240	440	244	2,560	DOC	Diarrhoea and gastroenteritis of presumed infectious origin	
3.2	5.8	3.6	3.4	2.7	3.0	3.5	5.2	4.7	3.3	2.9	3.7	3.3	ALS		
NA	NA	NA	NA	NA	NA	694	-	-	694	-	-	694	DISCH		O34
NA	NA	NA	NA	NA	NA	4,799	-	-	4,799	-	-	4,799	DOC	Maternal care for known or suspected abnormality of pelvic organs	
NA	NA	NA	NA	NA	NA	6.9	-	-	6.9	-	-	6.9	ALS		

Principle Diagnosis: the leading 100 diagnosis are listed and the total number of discharges made up by the last entry in the table - "others".

100

DISCH : Discharges

DOC : Days of Care (by number of discharges)

ALS : Average Length of Stay

Male						Female						Grand Total	DISCH DOC ALS	Principal Diagnosis	ICD10 Code
Age Groups						Age Groups									
Total	65+	45-64	15-44	1-14	1>	Total	65+	45-64	15-44	1-14	1>				
349	194	134	18	3	-	323	169	127	26	1	-	672	DISCH		H26
2,314	1,339	826	130	19	-	1,916	1,012	781	120	3	-	4,230	DOC	Other cataract	
7	7	6	7	6	-	6	6	6	5	3	-	6	ALS		
430	-	13	322	95	-	172	1	7	131	33	-	602	DISCH		K35
2,001	-	61	1,522	418	-	831	10	55	637	129	-	2,832	DOC	Acute appendicitis	
5	-	5	5	4	-	5	10	8	5	4	-	5	ALS		
322	NA	NA	NA	NA	322	275	NA	NA	NA	NA	275	597	DISCH		P59
1,841	NA	NA	NA	NA	1,841	1,759	NA	NA	NA	NA	1,759	3,600	DOC	Neonatal jaundice from other and unspecified causes	
6	NA	NA	NA	NA	6	6	NA	NA	NA	NA	6	6	ALS		
293	60	58	71	64	40	212	50	34	60	45	23	505	DISCH		J18
2,089	433	402	592	341	321	2,020	383	229	522	353	533	4,109	DOC	Pneumonia, organism unspecified	
7	7	7	8	5	8	10	8	7	9	8	23	8	ALS		
302	94	155	53	-	-	165	66	86	13	-	-	467	DISCH		I20
1,359	456	689	214	-	-	763	328	392	43	-	-	2,122	DOC	Angina pectoris	
5	5	4	4	-	-	5	5	5	3	-	-	5	ALS		
NA	NA	NA	NA	NA	NA	453	-	-	453	-	-	453	DISCH		O99
NA	NA	NA	NA	NA	NA	2,001	-	-	2,001	-	-	2,001	DOC	Other maternal diseases classifiable elsewhere but complicating pregnancy, childbirth and the puerperium	
NA	NA	NA	NA	NA	NA	4	-	-	4	-	-	4	ALS		
228	-	2	134	84	8	208	2	9	105	87	5	436	DISCH		J03
732	-	10	413	276	33	622	7	29	283	290	13	1,354	DOC	Acute tonsillitis	
3	-	5	3	3	4	3	4	3	3	3	3	3	ALS		
411	53	106	184	22	46	24	-	3	3	13	5	435	DISCH		K40
2,021	406	584	854	48	129	97	-	27	25	31	14	2,118	DOC	Inguinal hernia	
5	8	6	5	2	3	4	-	9	8	2	3	5	ALS		

Male						Female						Grand Total	DISCH DOC ALS	Principal Diagnosis	ICD10 Code
Age Groups						Age Groups									
Total	65+	45-64	15-44	1-14	1>	Total	65+	45-64	15-44	1-14	1>				
NA	NA	NA	NA	NA	NA	418	-	3	415	-	-	418	DISCH	Maternal care for other known or suspected fetal problems	O36
NA	NA	NA	NA	NA	NA	1,951	-	14	1,937	-	-	1,951	DOC		
NA	NA	NA	NA	NA	NA	5	-	5	5	-	-	5	ALS		
178	116	26	16	7	13	196	141	28	13	4	10	374	DISCH	Other septicaemia	A41
2,661	1,781	530	202	75	73	3,162	1,883	333	429	480	37	5,823	DOC		
15	15	20	13	11	6	16	13	12	33	120	4	16	ALS		
216	63	116	34	3	-	155	48	78	25	4	-	371	DISCH	Non-insulin-dependent diabetes mellitus	E11
3,207	1,042	1,695	451	19	-	1,579	518	746	301	14	-	4,786	DOC		
15	17	15	13	6	-	10	11	10	12	4	-	13	ALS		
194	121	60	10	-	3	176	116	53	5	2	-	370	DISCH	Heart failure	I50
1,228	809	353	53	-	13	1,036	678	325	27	6	-	2,264	DOC		
6	7	6	5	-	4	6	6	6	5	3	-	6	ALS		
92	10	21	47	14	-	277	15	73	182	7	-	369	DISCH	Cholelithiasis	K80
724	96	172	363	93	-	1,584	137	469	946	32	-	2,308	DOC		
8	10	8	8	7	-	6	9	6	5	5	-	6	ALS		
255	11	25	122	93	4	103	4	9	29	52	9	358	DISCH	Other and unspecified injuries of head	S09
1,264	75	190	812	182	5	288	21	40	83	128	16	1,552	DOC		
5	7	8	7	2	1	3	5	4	3	2	2	4	ALS		
257	7	74	176	-	-	76	3	29	42	2	-	333	DISCH	Calculus of kidney and ureter	N20
1,347	78	383	886	-	-	520	59	241	207	13	-	1,867	DOC		
5	11	5	5	-	-	7	20	8	5	7	-	6	ALS		
222	3	10	203	6	-	110	1	6	97	6	-	332	DISCH	Other disorders of nose and nasal sinuses	J34
847	11	36	782	18	-	399	3	20	360	16	-	1,246	DOC		
4	4	4	4	3	-	4	3	3	4	3	-	4	ALS		

Male						Female						Grand Total	DISCH DOC ALS	Principal Diagnosis	ICD10 Code
Age Groups						Age Groups									
Total	65+	45-64	15-44	1-14	1>	Total	65+	45-64	15-44	1-14	1>				
247	47	134	66	-	-	67	41	26	-	-	-	314	DISCH	Acute myocardial infarction	I21
1,425	293	719	413	-	-	513	280	233	-	-	-	1,938	DOC		
6	6	5	6	-	-	8	7	9	-	-	-	6	ALS		
110	8	10	58	33	1	201	14	15	147	25	-	311	DISCH	Abdominal and pelvic pain	R10
409	76	38	215	79	1	786	89	76	573	48	-	1,195	DOC		
4	10	4	4	2	1	4	6	5	4	2	-	4	ALS		
176	9	14	101	36	16	130	5	28	64	32	1	306	DISCH	Complications of procedures, not elsewhere classified	T81
904	71	109	579	114	31	849	41	259	436	108	5	1,753	DOC		
5	8	8	6	3	2	7	8	9	7	3	5	6	ALS		
173	69	85	19	-	-	125	79	44	2	-	-	298	DISCH	Chronic ischaemic heart disease	I25
1,199	693	426	80	-	-	730	503	213	14	-	-	1,929	DOC		
7	10	5	4	-	-	6	6	5	7	-	-	6	ALS		
136	16	18	27	57	18	160	44	50	23	35	8	296	DISCH	Status asthmaticus	J46
657	94	133	134	221	75	907	316	316	97	144	34	1,564	DOC		
5	6	7	5	4	4	6	7	6	4	4	4	5	ALS		
NA	NA	NA	NA	NA	NA	296	NA	1	295	NA	NA	296	DISCH	Haemorrhage in early pregnancy	O20
NA	NA	NA	NA	NA	NA	1,532	NA	5	1,527	NA	NA	1,532	DOC		
NA	NA	NA	NA	NA	NA	5	NA	5	5	NA	NA	5	ALS		
NA	NA	NA	NA	NA	NA	292	NA	3	289	NA	NA	292	DISCH	Unspecified maternal hypertension	O16
NA	NA	NA	NA	NA	NA	1,343	NA	7	1,336	NA	NA	1,343	DOC		
NA	NA	NA	NA	NA	NA	5	NA	2	5	NA	NA	5	ALS		
161	34	84	43	-	-	117	33	61	22	1	-	278	DISCH	Essential (primary) hypertension	I10
789	162	408	219	-	-	623	224	299	98	2	-	1,412	DOC		
5	5	5	5	-	-	5	7	5	4	2	-	5	ALS		
NA	NA	NA	NA	NA	NA	277	NA	-	277	NA	NA	277	DISCH	Infections of genitourinary tract in pregnancy	O23
NA	NA	NA	NA	NA	NA	959	NA	-	959	NA	NA	959	DOC		
NA	NA	NA	NA	NA	NA	3	NA	-	3	NA	NA	3	ALS		

Male						Female						Grand Total	DISCH DOC ALS	Principal Diagnosis	ICD10 Code
Age Groups						Age Groups									
Total	65+	45-64	15-44	1-14	1>	Total	65+	45-64	15-44	1-14	1>				
198	12	56	130	-	-	78	6	18	54	-	-	276	DISCH	Haemorrhoids	I84
1,378	126	411	841	-	-	448	55	115	278	-	-	1,826	DOC		
7	11	7	6	-	-	6	9	6	5	-	-	7	ALS		
89	35	15	21	12	6	186	37	43	43	56	7	275	DISCH	Other disorders of urinary system	N39
728	265	235	129	43	56	1,221	300	329	266	273	53	1,949	DOC		
8	8	16	6	4	9	7	8	8	6	5	8	7	ALS		
151	9	69	67	6	-	113	28	56	24	4	1	264	DISCH	Pain in throat and chest	R07
471	42	213	205	11	-	436	88	244	92	7	5	907	DOC		
3	5	3	3	2	-	4	3	4	4	2	5	3	ALS		
181	4	40	130	4	3	80	9	11	58	2	-	261	DISCH	Fissure and fistula of anal and rectal regions	K60
1,011	26	247	715	16	7	444	47	57	335	5	-	1,455	DOC		
6	7	6	6	4	2	6	5	5	6	3	-	6	ALS		
146	98	44	1	2	1	105	92	9	-	3	1	251	DISCH	Other chronic obstructive pulmonary disease	J44
1,214	796	395	3	17	3	1,407	1,262	113	-	27	5	2,621	DOC		
8	8	9	3	9	3	13	14	13	-	9	5	10	ALS		
138	21	29	65	22	1	106	21	25	40	20	-	244	DISCH	Gastritis and duodenitis	K29
672	154	136	260	117	5	445	153	114	131	47	-	1,117	DOC		
5	7	5	4	5	5	4	7	5	3	2	-	5	ALS		
112	38	19	39	16	-	111	67	21	4	15	4	223	DISCH	Fracture of femur	S72
1,916	717	379	547	273	-	1,889	1,208	413	80	157	31	3,805	DOC		
17	19	20	14	17	-	17	18	20	20	10	8	17	ALS		
2	2	-	-	-	-	219	21	119	79	-	-	221	DISCH	Malignant neoplasm of breast	C50
76	76	-	-	-	-	2,419	253	1,216	950	-	-	2,495	DOC		
38	38	-	-	-	-	11	12	10	12	-	-	11	ALS		

Male						Female						Grand Total	DISCH DOC ALS	Principal Diagnosis	ICD10 Code
Age Groups						Age Groups									
Total	65+	45-64	15-44	1-14	1>	Total	65+	45-64	15-44	1-14	1>				
115	7	4	14	69	21	101	1	3	8	72	17	216	DISCH		Z01
201	30	24	44	74	29	143	2	12	30	81	18	344	DOC	Other special examinations and investigations of persons	
2	4	6	3	1	1	1	2	4	4	1	1	2	ALS	without complaint or reported diagnosis	
109	2	1	25	45	36	104	8	4	25	37	30	213	DISCH		J06
366	6	3	103	144	110	318	35	16	76	110	81	684	DOC	Acute upper respiratory infections of multiple	
3	3	3	4	3	3	3	4	4	3	3	3	3	ALS	and unspecified sites	
NA	NA	NA	NA	NA	NA	212	NA	2	210	NA	NA	212	DISCH		O02
NA	NA	NA	NA	NA	NA	589	NA	7	582	NA	NA	589	DOC	Other abnormal products of conception	
NA	NA	NA	NA	NA	NA	3	NA	4	3	NA	NA	3	ALS		
121	8	11	49	31	22	91	13	10	26	18	24	212	DISCH		R50
753	106	52	351	168	76	489	69	70	154	112	84	1,242	DOC	Fever of unknown origin	
6	13	5	7	5	3	5	5	7	6	6	4	6	ALS		
101	38	31	32	-	-	109	64	36	9	-	-	210	DISCH		I48
577	234	244	99	-	-	483	302	145	36	-	-	1,060	DOC	Atrial fibrillation and flutter	
6	6	8	3	-	-	4	5	4	4	-	-	5	ALS		
132	10	36	62	20	4	71	9	25	20	12	5	203	DISCH		L02
875	98	333	342	87	15	715	114	287	193	46	75	1,590	DOC	Cutaneous abscess, furuncle and carbuncle	
7	10	9	6	4	4	10	13	11	10	4	15	8	ALS		
NA	NA	NA	NA	NA	NA	201	NA	1	200	NA	NA	201	DISCH		O32
NA	NA	NA	NA	NA	NA	1,121	NA	5	1,116	NA	NA	1,121	DOC	Maternal care for known or suspected malpresentation of fetus	
NA	NA	NA	NA	NA	NA	6	NA	5	6	NA	NA	6	ALS		
142	3	27	91	21	-	53	6	14	26	7	-	195	DISCH		S82
1,390	12	297	951	130	-	544	142	117	248	37	-	1,934	DOC	Fracture of lower leg, including ankle	
10	4	11	10	6	-	10	24	8	10	5	-	10	ALS		
123	12	28	49	32	2	70	6	13	30	21	-	193	DISCH		L03
773	117	247	291	112	6	355	71	90	133	61	-	1,128	DOC	Cellulitis	
6	10	9	6	4	3	5	12	7	4	3	-	6	ALS		

Male						Female						Grand Total	DISCH DOC ALS	Principal Diagnosis	ICD10 Code
Age Groups						Age Groups									
Total	65+	45-64	15-44	1-14	1>	Total	65+	45-64	15-44	1-14	1>				
NA	NA	NA	NA	NA	NA	192	NA	1	191	NA	NA	192	DISCH	()	O24
NA	NA	NA	NA	NA	NA	904	NA	6	898	NA	NA	904	DOC	Diabetes mellitus in pregnancy	
NA	NA	NA	NA	NA	NA	5	NA	6	5	NA	NA	5	ALS		
126	4	45	77	-	-	64	5	22	37	-	-	190	DISCH		M51
1,157	36	489	632	-	-	829	58	439	332	-	-	1,986	DOC	Other intervertebral disc disorders	
9	9	11	8	-	-	13	12	20	9	-	-	10	ALS		
114	15	28	70	1	-	75	13	25	35	2	-	189	DISCH		M54
825	169	198	452	6	-	518	118	191	201	8	-	1,343	DOC	Dorsalgia	
7	11	7	6	6	-	7	9	8	6	4	-	7	ALS		
86	1	6	34	35	10	101	1	7	42	40	11	187	DISCH	()	E10
594	3	69	206	226	90	573	11	51	207	237	67	1,167	DOC	Insulin-dependent diabetes mellitus	
7	3	12	6	6	9	6	11	7	5	6	6	6	ALS		
90	42	43	4	1	-	97	61	35	1	-	-	187	DISCH		I11
521	239	269	12	1	-	675	404	268	3	-	-	1,196	DOC	Hypertensive heart disease	
6	6	6	3	1	-	7	7	8	3	-	-	6	ALS		
91	35	32	24	-	-	94	38	40	16	-	-	185	DISCH		I12
960	328	332	300	-	-	1,109	432	455	222	-	-	2,069	DOC	Hypertensive renal disease	
11	9	10	13	-	-	12	11	11	14	-	-	11	ALS		
95	41	31	23	-	-	86	33	38	14	1	-	181	DISCH		E14
800	359	305	136	-	-	589	279	235	66	9	-	1,389	DOC	Unspecified diabetes mellitus	
8	9	10	6	-	-	7	8	6	5	9	-	8	ALS		
148	1	7	109	29	2	31	-	2	19	8	2	179	DISCH		S02
854	9	65	683	95	2	110	-	4	74	30	2	964	DOC	Fracture of skull and facial bones	
6	9	9	6	3	1	4	-	2	4	4	1	5	ALS		
NA	NA	NA	NA	NA	NA	173	NA	-	173	NA	NA	173	DISCH		O71
NA	NA	NA	NA	NA	NA	451	NA	-	451	NA	NA	451	DOC	Other obstetric trauma	
NA	NA	NA	NA	NA	NA	3	NA	-	3	NA	NA	3	ALS		

Male						Female						Grand Total	DISCH DOC ALS	Principal Diagnosis	ICD10 Code
Age Groups						Age Groups									
Total	65+	45-64	15-44	1-14	1>	Total	65+	45-64	15-44	1-14	1>				
94	3	9	21	53	8	79	2	5	11	51	10	173	DISCH	Convulsions, not elsewhere classified	R56
257	9	31	61	123	33	311	11	16	106	154	24	568	DOC		
3	3	3	3	2	4	4	6	3	10	3	2	3	ALS		
NA	NA	NA	NA	NA	NA	172	NA	-	172	NA	NA	172	DISCH	False labour	O47
NA	NA	NA	NA	NA	NA	565	NA	-	565	NA	NA	565	DOC		
NA	NA	NA	NA	NA	NA	3	NA	-	3	NA	NA	3	ALS		
87	6	15	45	19	2	82	8	7	33	31	3	169	DISCH	Epilepsy	G40
308	31	49	166	55	7	415	97	38	145	102	33	723	DOC		
4	5	3	4	3	4	5	12	5	4	3	11	4	ALS		
124	16	19	89	-	-	44	1	5	37	1	-	168	DISCH	Respiratory tuberculosis, not confirmed bacteriologically or histologically	A16
3,256	237	925	2,094	-	-	1,127	33	176	895	23	-	4,383	DOC		
26	15	49	24	-	-	26	33	35	24	23	-	26	ALS		
111	1	19	91	-	-	56	5	11	40	-	-	167	DISCH	Unspecified renal colic	N23
408	2	89	317	-	-	298	20	42	236	-	-	706	DOC		
4	2	5	3	-	-	5	4	4	6	-	-	4	ALS		
88	44	41	2	1	-	77	49	24	4	-	-	165	DISCH	Stroke, not specified as haemorrhage or infarction	I64
1,071	543	467	4	57	-	1,232	740	460	32	-	-	2,303	DOC		
12	12	11	2	57	-	16	15	19	8	-	-	14	ALS		
100	37	20	33	6	4	63	25	11	20	5	2	163	DISCH	Other respiratory disorders	J98
834	314	155	303	19	43	759	231	56	173	203	96	1,593	DOC		
8	8	8	9	3	11	12	9	5	9	41	48	10	ALS		
NA	NA	NA	NA	NA	NA	157	-	70	82	5	NA	157	DISCH	Excessive, frequent and irregular menstruation	N92
NA	NA	NA	NA	NA	NA	637	-	289	325	23	NA	637	DOC		
NA	NA	NA	NA	NA	NA	4	-	4	4	5	NA	4	ALS		

Male						Female						Grand Total	DISCH DOC ALS	Principal Diagnosis	ICD10 Code
Age Groups						Age Groups									
Total	65+	45-64	15-44	1-14	1>	Total	65+	45-64	15-44	1-14	1>				
NA	NA	NA	NA	NA	NA	156	0	73	81	2	NA	156	DISCH	Other abnormal uterine and vaginal bleeding	N93
NA	NA	NA	NA	NA	NA	550	0	312	232	6	NA	550	DOC		
NA	NA	NA	NA	NA	NA	4	0	4	3	3	NA	4	ALS		
123	28	31	63	1	-	32	14	9	9	-	-	155	DISCH	Duodenal ulcer	K26
968	294	278	379	17	-	195	119	53	23	-	-	1,163	DOC		
8	11	9	6	17	-	6	9	6	3	-	-	8	ALS		
87	1	6	15	48	17	62	0	4	18	35	5	149	DISCH	Suppurative and unspecified otitis media	H66
345	23	23	52	173	74	208	0	15	61	106	26	553	DOC		
4	23	4	3	4	4	3	0	4	3	3	5	4	ALS		
80	NA	NA	NA	NA	80	67	NA	NA	NA	NA	67	147	DISCH	Disorders related to short gestation and low birth weight, not elsewhere classified	P07
1,556	NA	NA	NA	NA	1,556	1,129	NA	NA	NA	NA	1,129	2,685	DOC		
19	NA	NA	NA	NA	19	17	NA	NA	NA	NA	17	18	ALS		
92	-	3	4	3	82	51	1	2	2	1	45	143	DISCH	Acute bronchiolitis	J21
517	-	29	27	12	449	234	3	17	6	5	203	751	DOC		
6	-	10	7	4	5	5	3	9	3	5	5	5	ALS		
120	2	10	83	25	-	21	1	4	11	5	-	141	DISCH	Fracture of forearm	S52
515	7	41	398	69	-	115	2	28	73	12	-	630	DOC		
4	4	4	5	3	-	5	2	7	7	2	-	4	ALS		
NA	NA	NA	NA	NA	NA	132	NA	NA	132	NA	NA	132	DISCH	Supervision of normal pregnancy	Z34
NA	NA	NA	NA	NA	NA	419	NA	NA	419	NA	NA	419	DOC		
NA	NA	NA	NA	NA	NA	3	NA	NA	3	NA	NA	3	ALS		
45	4	11	17	5	8	85	7	28	26	5	19	130	DISCH	Gastro-oesophageal reflux disease	K21
252	25	49	100	50	28	512	48	163	152	17	132	764	DOC		
6	6	4	6	10	4	6	7	6	6	3	7	6	ALS		

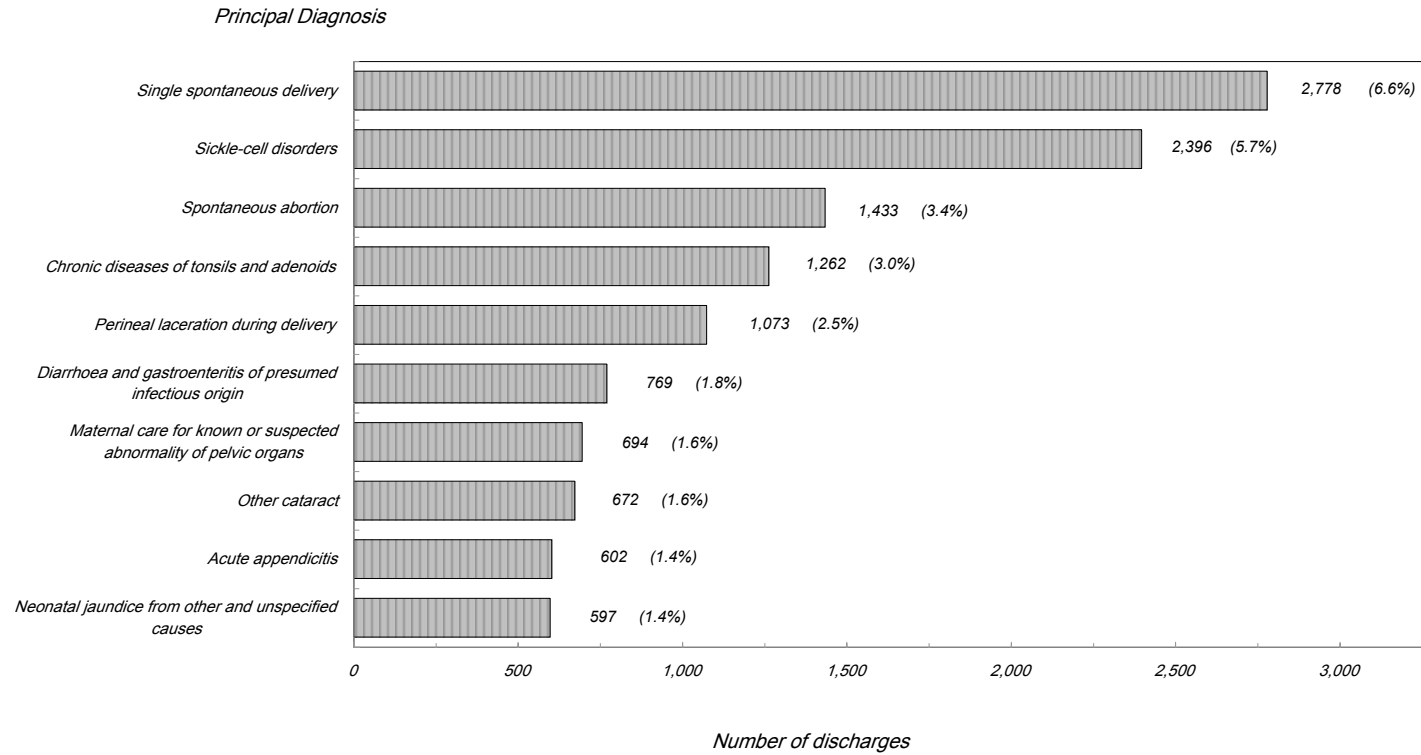
Male						Female						Grand Total	DISCH DOC ALS	Principal Diagnosis	ICD10 Code
Age Groups						Age Groups									
Total	65+	45-64	15-44	1-14	1>	Total	65+	45-64	15-44	1-14	1>				
76	2	4	16	53	1	53	-	11	23	19	-	129	DISCH	Nonsuppurative otitis media	H65
220	5	13	57	144	1	164	-	43	70	51	-	384	DOC		
3	3	3	4	3	1	3	-	4	3	3	-	3	ALS		
129	101	28	-	-	-	NA	NA	NA	NA	NA	NA	129	DISCH	Hyperplasia of prostate	N40
1,078	843	235	-	-	-	NA	NA	NA	NA	NA	NA	1,078	DOC		
8	8	8	-	-	-	NA	NA	NA	NA	NA	NA	8	ALS		
28	-	1	22	4	1	90	-	-	82	8	-	118	DISCH	Poisoning by nonopioid analgesics, antipyretics and antirheumatics	T39
55	-	1	43	10	1	176	-	-	162	14	-	231	DOC		
2	-	1	2	3	1	2	-	-	2	2	-	2	ALS		
90	3	12	58	17	-	26	1	3	19	3	-	116	DISCH	Other orthopaedic follow-up care	Z47
370	18	54	222	76	-	117	6	14	76	21	-	487	DOC		
4	6	5	4	4	-	5	6	5	4	7	-	4	ALS		
75	26	41	7	1	-	39	19	17	3	-	-	114	DISCH	Cerebral infarction	I63
753	272	423	57	1	-	686	252	409	25	-	-	1,439	DOC		
10	10	10	8	1	-	18	13	24	8	-	-	13	ALS		
NA	NA	NA	NA	NA	NA	114	3	12	96	3	-	114	DISCH	Noninflammatory disorders of ovary, fallopian tube and broad ligament	N83
NA	NA	NA	NA	NA	NA	538	33	76	417	12	-	538	DOC		
NA	NA	NA	NA	NA	NA	5	11	6	4	4	-	5	ALS		
NA	NA	NA	NA	NA	NA	113	NA	-	113	NA	NA	113	DISCH	Single delivery by forceps and vacuum extractor	O81
NA	NA	NA	NA	NA	NA	417	NA	-	417	NA	NA	417	DOC		
NA	NA	NA	NA	NA	NA	4	NA	-	4	NA	NA	4	ALS		
86	46	39	1	-	-	26	17	9	-	-	-	112	DISCH	Malignant neoplasm of bronchus and lung	C34
1,551	888	653	10	-	-	543	343	200	-	-	-	2,094	DOC		
18	19	17	10	-	-	21	20	22	-	-	-	19	ALS		

Male						Female						Grand Total	DISCH DOC ALS	Principal Diagnosis	ICD10 Code
Age Groups						Age Groups									
Total	65+	45-64	15-44	1-14	1>	Total	65+	45-64	15-44	1-14	1>				
20	3	2	9	3	3	86	4	4	67	7	4	106	DISCH	Examination and observation for other reasons	Z04
48	13	2	21	7	5	234	40	11	168	8	7	282	DOC		
2	4	1	2	2	2	3	10	3	3	1	2	3	ALS		
74	-	3	67	3	1	31	-	2	24	3	2	105	DISCH	Pilonidal cyst	L05
431	-	21	392	16	2	214	-	10	178	20	6	645	DOC		
6	-	7	6	5	2	7	-	5	7	7	3	6	ALS		
31	1	17	12	-	1	73	2	21	48	2	-	104	DISCH	Umbilical hernia	K42
187	9	115	53	-	10	399	11	127	254	7	-	586	DOC		
6	9	7	4	-	10	5	6	6	5	4	-	6	ALS		
NA	NA	NA	NA	NA	NA	100	NA	-	100	NA	NA	100	DISCH	Ectopic pregnancy	O00
NA	NA	NA	NA	NA	NA	462	NA	-	462	NA	NA	462	DOC		
NA	NA	NA	NA	NA	NA	5	NA	-	5	NA	NA	5	ALS		
67	NA	NA	NA	NA	67	31	NA	NA	NA	NA	31	98	DISCH	Neonatal jaundice due to other excessive haemolysis	P58
296	NA	NA	NA	NA	296	137	NA	NA	NA	NA	137	433	DOC		
4	NA	NA	NA	NA	4	4	NA	NA	NA	NA	4	4	ALS		
54	22	12	15	5	-	43	20	11	6	6	-	97	DISCH	Other diseases of digestive system	K92
479	258	142	53	26	-	392	164	156	23	49	-	871	DOC		
9	12	12	4	5	-	9	8	14	4	8	-	9	ALS		
55	10	12	29	4	-	41	13	3	24	1	-	96	DISCH	Keratitis	H16
503	113	131	245	14	-	321	154	11	154	2	-	824	DOC		
9	11	11	8	4	-	8	12	4	6	2	-	9	ALS		
77	40	28	9	-	-	17	2	10	5	-	-	94	DISCH	Malignant neoplasm of colon	C18
866	402	255	209	-	-	222	28	142	52	-	-	1,088	DOC		
11	10	9	23	-	-	13	14	14	10	-	-	12	ALS		

Male						Female						Grand Total	DISCH DOC ALS	Principal Diagnosis	ICD10 Code
Age Groups						Age Groups									
Total	65+	45-64	15-44	1-14	1>	Total	65+	45-64	15-44	1-14	1>				
61	16	25	14	2	4	33	6	10	8	8	1	94	DISCH	Cardiomyopathy	I42
584	136	339	89	12	8	172	22	57	49	39	5	756	DOC		
10	9	14	6	6	2	5	4	6	6	5	5	8	ALS		
46	10	4	7	20	5	48	6	22	11	6	3	94	DISCH	Asthma	J45
217	70	18	40	63	26	248	43	120	47	18	20	465	DOC		
5	7	5	6	3	5	5	7	5	4	3	7	5	ALS		
90	-	1	88	1	-	3	-	1	2	-	-	93	DISCH	Internal derangement of knee	M23
511	-	18	486	7	-	16	-	6	10	-	-	527	DOC		
6	-	18	6	7	-	5	-	6	5	-	-	6	ALS		
60	11	10	24	5	10	32	7	5	6	8	6	92	DISCH	Paralytic ileus and intestinal obstruction without hernia	K56
489	101	131	163	17	77	212	65	32	42	61	12	701	DOC		
8	9	13	7	3	8	7	9	6	7	8	2	8	ALS		
NA	NA	NA	NA	NA	NA	90	NA	1	89	NA	NA	90	DISCH	Maternal care for known or suspected disproportion	O33
NA	NA	NA	NA	NA	NA	483	NA	21	462	NA	NA	483	DOC		
NA	NA	NA	NA	NA	NA	5	NA	21	5	NA	NA	5	ALS		
NA	NA	NA	NA	NA	NA	89	-	32	57	NA	NA	89	DISCH	Leiomyoma of uterus	D25
NA	NA	NA	NA	NA	NA	515	-	194	321	NA	NA	515	DOC		
NA	NA	NA	NA	NA	NA	6	-	6	6	NA	NA	6	ALS		
52	NA	NA	NA	NA	52	33	NA	NA	NA	NA	33	85	DISCH	Respiratory distress of newborn	P22
616	NA	NA	NA	NA	616	537	NA	NA	NA	NA	537	1,153	DOC		
12	NA	NA	NA	NA	12	16	NA	NA	NA	NA	16	14	ALS		
NA	NA	NA	NA	NA	NA	83	20	58	5	NA	NA	83	DISCH	Menopausal and other perimenopausal disorders	N95
NA	NA	NA	NA	NA	NA	373	155	206	12	NA	NA	373	DOC		
NA	NA	NA	NA	NA	NA	4	8	4	2	NA	NA	4	ALS		

<i>Male</i>						<i>Female</i>						<i>Grand Total</i>	<i>DISCH DOC ALS</i>	<i>Principal Diagnosis</i>	<i>ICD10 Code</i>
<i>Age Groups</i>						<i>Age Groups</i>									
<i>Total</i>	<i>65+</i>	<i>45-64</i>	<i>15-44</i>	<i>1-14</i>	<i>1></i>	<i>Total</i>	<i>65+</i>	<i>45-64</i>	<i>15-44</i>	<i>1-14</i>	<i>1></i>				
33	12	10	9	-	2	49	31	12	6	-	-	82	DISCH	Other disorders of fluid, electrolyte and acid-base balance	E87
263	115	74	38	-	36	544	375	134	35	-	-	807	DOC		
8	10	7	4	-	18	11	12	11	6	-	-	10	ALS		
42	1	4	17	20	-	38	4	4	10	20	-	80	DISCH	Fracture of shoulder and upper arm	S42
208	1	27	139	41	-	276	64	41	140	31	-	484	DOC		
5	1	7	8	2	-	7	16	10	14	2	-	6	ALS		
12,307	1,830	2,235	4,991	2,249	1,002	18,512	1,679	1,970	12,490	1,637	736	30,819	DISCH	100	Total Leading 100 Diagnosis
78,733	16,770	17,723	29,472	8,350	6,418	91,210	15,160	14,436	49,578	6,590	5,446	169,943	DOC		
6	9	8	6	4	6	5	9	7	4	4	7	6	ALS		
5,924	795	1,198	2,276	1,111	544	5,618	676	1,074	2,782	666	420	11,542	DISCH	Total of Others	
46,714	9,178	10,828	16,459	6,242	4,007	45,419	8,215	10,658	17,076	5,278	4,192	92,133	DOC		
8	12	9	7	6	7	8	12	10	6	8	10	8	ALS		
18,231	2,625	3,433	7,267	3,360	1,546	24,130	2,355	3,044	15,272	2,303	1,156	42,361	DISCH	Total	
125,447	25,948	28,551	45,931	14,592	10,425	136,629	23,375	25,094	66,654	11,868	9,638	262,076	DOC		
7	10	8	6	4	7	6	10	8	4	5	8	6	ALS		

2003
Discharges by The Ten Leading Diagnosis 2003



Refer: Table 9.14

9.14 :

<i>Disch.</i>	<i>Post Operation Days</i>				<i>Pre Operation Days</i>				<i>Department</i>
	<i>Avg.L.S.</i>	<i>Median</i>	<i>Max.</i>	<i>Min.</i>	<i>Avg.L.S.</i>	<i>Median</i>	<i>Max.</i>	<i>Min.</i>	
1,789	5	2	285	-	4	1	73	-	Medical
4,823	5	3	326	-	3	1	105	-	Surgical
958	3	3	22	-	3	3	40	-	Ophthalmology
2,476	2	2	48	-	1	1	28	-	E.N.T.
251	3	2	41	-	2	1	13	-	Dental
374	4	1	60	-	3	1	48	-	Pediatrics
1	2	2	2	2	1	1	1	1	Radiology
1,504	8	4	128	-	2	1	63	-	Orthopedic Surgery & Fracture
231	11	6	219	-	5	1	61	-	Plastic Surgery & Burns
9,928	2	1	184	-	2	1	143	-	Obstetrics & Gynecology
67	8	-	77	-	25	9	122	-	Special Care Baby Unit

Avg.L.S: Average Length of Stay .

المتوسط : متوسط مدة الإقامة .

<i>Type of Anaesthesia</i>	<i>2003</i>	<i>2002</i>	<i>2001</i>	<i>2000</i>	<i>1999</i>
General anaesthesia	14,685	15,333	14,179	14,543	14,866
Local anaesthesia	3,785	3,603	3,696	4,485	4,238
Spinal , epidural & regional	1,994	4,023	2,215	1,384	1,180
Sedation	1,177	1,455	2,808	2,551	2,511
Total	21,641	24,414	22,898	22,963	22,795

Cause of Death	Total			48 hrs & over			48 Less than 48 hrs			Sex	ICD10 Code
	Total	Non-Bah	Bah	Total	Non-Bah	Bah	Total	Non-Bah	Bah		
	Intestinal infectious Diseases	3	1	2	3	1	2	-	-		
	2	-	2	2	-	2	-	-	-	Female	
	5	1	4	5	1	4	-	-	-	Total	
Tuberculosis	3	-	3	2	-	2	1	-	1	Male	() A15-A19
	2	-	2	2	-	2	-	-	-	Female	
	5	-	5	4	-	4	1	-	1	Total	
Other bacterial diseases	120	9	111	96	7	89	24	2	22	Male	A30-A49
	134	7	127	109	6	103	25	1	24	Female	
	254	16	238	205	13	192	49	3	46	Total	
Viral infections of the central nervous system	-	-	-	-	-	-	-	-	-	Male	A80-A89
	2	-	2	2	-	2	-	-	-	Female	
	2	-	2	2	-	2	-	-	-	Total	
Human immunodeficiency virus [HIV] disease	4	-	4	4	-	4	-	-	-	Male	B20-B24
	-	-	-	-	-	-	-	-	-	Female	()
	4	-	4	4	-	4	-	-	-	Total	
Protozoal diseases	1	-	1	-	-	-	1	-	1	Male	B50-B64
	-	-	-	-	-	-	-	-	-	Female	
	1	-	1	-	-	-	1	-	1	Total	
Malignant neoplasms of lip, oral cavity and pharynx	8	1	7	7	1	6	1	-	1	Male	C00-C14
	1	-	1	-	-	-	1	-	1	Female	
	9	1	8	7	1	6	2	-	2	Total	
Malignant neoplasms of digestive organs	26	3	23	24	3	21	2	-	2	Male	C15-C26
	16	1	15	15	1	14	1	-	1	Female	
	42	4	38	39	4	35	3	-	3	Total	
Malignant neoplasm of respiratory and intrathoracic organs	25	1	24	24	1	23	1	-	1	Male	C30-C39
	10	-	10	10	-	10	-	-	-	Female	
	35	1	34	34	1	33	1	-	1	Total	
Malignant neoplasm of bone and articular cartilage	1	-	1	-	-	-	1	-	1	Male	C40-C41
	1	-	1	1	-	1	-	-	-	Female	
	2	-	2	1	-	1	1	-	1	Total	

Cause of Death	Total			48 hrs & over			48 Less than 48 hrs			Sex	ICD10 Code
	Total	Non-Bah	Bah	Total	Non-Bah	Bah	Total	Non-Bah	Bah		
Malignant neoplasms of mesothelial and soft tissues	2	-	2	1	-	1	1	-	1	Male	C45-C49
	-	-	-	-	-	-	-	-	-	Female	
	2	-	2	1	-	1	1	-	1	Total	
Malignant neoplasms of breast	-	-	-	-	-	-	-	-	-	Male	C50
	23	4	19	21	4	17	2	-	2	Female	
	23	4	19	21	4	17	2	-	2	Total	
Malignant neoplasms of female genital organs	-	-	-	-	-	-	-	-	-	Male	C51-C58
	7	-	7	7	-	7	-	-	-	Female	
	7	-	7	7	-	7	-	-	-	Total	
Malignant neoplasms of male genital organs	4	3	1	3	2	1	1	1	-	Male	C60-C63
	-	-	-	-	-	-	-	-	-	Female	
	4	3	1	3	2	1	1	1	-	Total	
Malignant neoplasms of urinary tract	6	-	6	6	-	6	-	-	-	Male	C64-C68
	2	-	2	1	-	1	1	-	1	Female	
	8	-	8	7	-	7	1	-	1	Total	
Malignant neoplasms of eye, brain & other parts of central nervous system	2	-	2	2	-	2	-	-	-	Male	C69-C72
	3	-	3	3	-	3	-	-	-	Female	
	5	-	5	5	-	5	-	-	-	Total	
Malignant neoplasms of thyroid and other endocrine glands	-	-	-	-	-	-	-	-	-	Male	C73-C75
	3	-	3	3	-	3	-	-	-	Female	
	3	-	3	3	-	3	-	-	-	Total	
Malignant neoplasms of ill-defined, secondary and unspecified sites	6	-	6	5	-	5	1	-	1	Male	C76-C80
	5	1	4	4	1	3	1	-	1	Female	
	11	1	10	9	1	8	2	-	2	Total	
Malignant neoplasm of lymphoid, haematopoietic and related tissue	6	-	6	5	-	5	1	-	1	Male	C81-C96
	4	-	4	4	-	4	-	-	-	Female	
	10	-	10	9	-	9	1	-	1	Total	
Benign Neoplasm	2	1	1	2	1	1	-	-	-	Male	D10-D36
	-	-	-	-	-	-	-	-	-	Female	
	2	1	1	2	1	1	-	-	-	Total	

Cause of Death	Total			48 48 hrs & over			48 Less than 48 hrs			Sex	ICD10 Code
	Total	Non-Bah	Bah	Total	Non-Bah	Bah	Total	Non-Bah	Bah		
	Neoplasms of uncertain or unknown behaviour	2	1	1	2	1	1	-	-		
	-	-	-	-	-	-	-	-	-	Female	
	2	1	1	2	1	1	-	-	-	Total	
Haemolytic anaemias	4	-	4	2	-	2	2	-	2	2 Male	D55-D59
	2	-	2	-	-	-	2	-	2	2 Female	
	6	-	6	2	-	2	4	-	4	4 Total	
Aplastic and other anaemias	2	-	2	2	-	2	-	-	-	Male	D60-D64
	1	-	1	1	-	1	-	-	-	Female	
	3	-	3	3	-	3	-	-	-	Total	
Coagulation defects, purpura and other haemorrhagic conditions	1	-	1	1	-	1	-	-	-	Male	D65-D69
	6	-	6	6	-	6	-	-	-	Female	
	7	-	7	7	-	7	-	-	-	Total	
Certain disorders involving the immune mechanism	1	1	-	1	1	-	-	-	-	Male	D80-D89
	-	-	-	-	-	-	-	-	-	Female	
	1	1	-	1	1	-	-	-	-	Total	
Diabetes mellitus	2	-	2	2	-	2	-	-	-	Male	E10-E14
	2	-	2	-	-	-	2	-	2	2 Female	
	4	-	4	2	-	2	2	-	2	2 Total	
Metabolic disorders	6	-	6	4	-	4	2	-	2	2 Male	E70-E90
	9	-	9	9	-	9	-	-	-	Female	
	15	-	15	13	-	13	2	-	2	2 Total	
Inflammatory diseases of the central nervous system	1	1	-	1	1	-	-	-	-	Male	G00-G09
	3	-	3	3	-	3	-	-	-	Female	
	4	1	3	4	1	3	-	-	-	Total	
Systemic atrophies primarily affecting the central nervous system	-	-	-	-	-	-	-	-	-	Male	G10-G13
	1	-	1	1	-	1	-	-	-	Female	
	1	-	1	1	-	1	-	-	-	Total	
Episodic and paroxysmal disorders	-	-	-	-	-	-	-	-	-	Male	G40-G47
	1	-	1	1	-	1	-	-	-	Female	
	1	-	1	1	-	1	-	-	-	Total	

Cause of Death	Total			48 48 hrs & over			48 Less than 48 hrs			Sex	ICD10 Code
	Total	Non-Bah	Bah	Total	Non-Bah	Bah	Total	Non-Bah	Bah		
Cerebral palsy and other paralytic syndromes	-	-	-	-	-	-	-	-	-	- Male	G80-G83
	3	-	3	3	-	3	-	-	-	- Female	
	3	-	3	3	-	3	-	-	-	- Total	
Other disorders of the nervous system	7	2	5	7	2	5	-	-	-	- Male	G90-G99
	4	-	4	4	-	4	-	-	-	- Female	
	11	2	9	11	2	9	-	-	-	- Total	
Hypertensive diseases	13	1	12	12	1	11	1	-	1	1 Male	I10-I15
	17	-	17	16	-	16	1	-	1	1 Female	
	30	1	29	28	1	27	2	-	2	2 Total	
Ischaemic heart disease	27	6	21	19	4	15	8	2	6	6 Male	I20-I25
	25	1	24	19	1	18	6	-	6	6 Female	
	52	7	45	38	5	33	14	2	12	12 Total	
Pulmonary heart diseases and diseases of pulmonary circulation	6	3	3	5	2	3	1	1	-	- Male	I26-I28
	7	2	5	7	2	5	-	-	-	- Female	
	13	5	8	12	4	8	1	1	-	- Total	
Other forms of heart diseases	34	4	30	26	4	22	8	-	8	8 Male	I30-I52
	23	2	21	19	1	18	4	1	3	3 Female	
	57	6	51	45	5	40	12	1	11	11 Total	
Cerebrovascular diseases	38	13	25	33	9	24	5	4	1	1 Male	I60-I69
	43	7	36	41	6	35	2	1	1	1 Female	
	81	20	61	74	15	59	7	5	2	2 Total	
Diseases of arteries, arterioles and capillaries	-	-	-	-	-	-	-	-	-	- Male	I70-I79
	1	-	1	-	-	-	1	-	1	1 Female	
	1	-	1	-	-	-	1	-	1	1 Total	
Diseases of veins, lymphatic vessels and lymph nodes, not elsewhere classified	3	2	1	3	2	1	-	-	-	- Male	I80-I89
	-	-	-	-	-	-	-	-	-	- Female	
	3	2	1	3	2	1	-	-	-	- Total	
Other and unspecified disorders of the circulatory system	1	-	1	1	-	1	-	-	-	- Male	I95-I99
	-	-	-	-	-	-	-	-	-	- Female	
	1	-	1	1	-	1	-	-	-	- Total	

Cause of Death	Total			48 hrs & over			48 Less than 48 hrs			Sex	ICD10 Code
	Total	Non-Bah	Bah	Total	Non-Bah	Bah	Total	Non-Bah	Bah		
Acute upper respiratory infections	-	-	-	-	-	-	-	-	-	Male	J00-J06
	2	-	2	2	-	2	-	-	-	Female	
	2	-	2	2	-	2	-	-	-	Total	
Influenza and pneumonia	10	1	9	7	1	6	3	-	3	Male	J10-J18
	8	2	6	7	2	5	1	-	1	Female	
	18	3	15	14	3	11	4	-	4	Total	
Chronic lower respiratory diseases	20	5	15	16	4	12	4	1	3	Male	J40-J47
	8	-	8	7	-	7	1	-	1	Female	
	28	5	23	23	4	19	5	1	4	Total	
Lung diseases due to external agents	13	1	12	11	-	11	2	1	1	Male	J60-J70
	6	-	6	5	-	5	1	-	1	Female	
	19	1	18	16	-	16	3	1	2	Total	
Other respiratory diseases principally affecting the interstitium	7	1	6	7	1	6	-	-	-	Male	J80-J84
	6	1	5	6	1	5	-	-	-	Female	
	13	2	11	13	2	11	-	-	-	Total	
Other diseases of pleura	-	-	-	-	-	-	-	-	-	Male	J90-J94
	3	1	2	3	1	2	-	-	-	Female	
	3	1	2	3	1	2	-	-	-	Total	
Other diseases of the respiratory system	11	2	9	7	1	6	4	1	3	Male	J95-J99
	9	1	8	8	1	7	1	-	1	Female	
	20	3	17	15	2	13	5	1	4	Total	
Diseases of oesophagus, stomach and duodenum	5	-	5	4	-	4	1	-	1	Male	K20-K31
	2	-	2	2	-	2	-	-	-	Female	
	7	-	7	6	-	6	1	-	1	Total	
Hernia	1	-	1	-	-	-	1	-	1	Male	K40-K46
	-	-	-	-	-	-	-	-	-	Female	
	1	-	1	-	-	-	1	-	1	Total	
Noninfective enteritis and colitis	1	-	1	1	-	1	-	-	-	Male	K50-K52
	-	-	-	-	-	-	-	-	-	Female	
	1	-	1	1	-	1	-	-	-	Total	

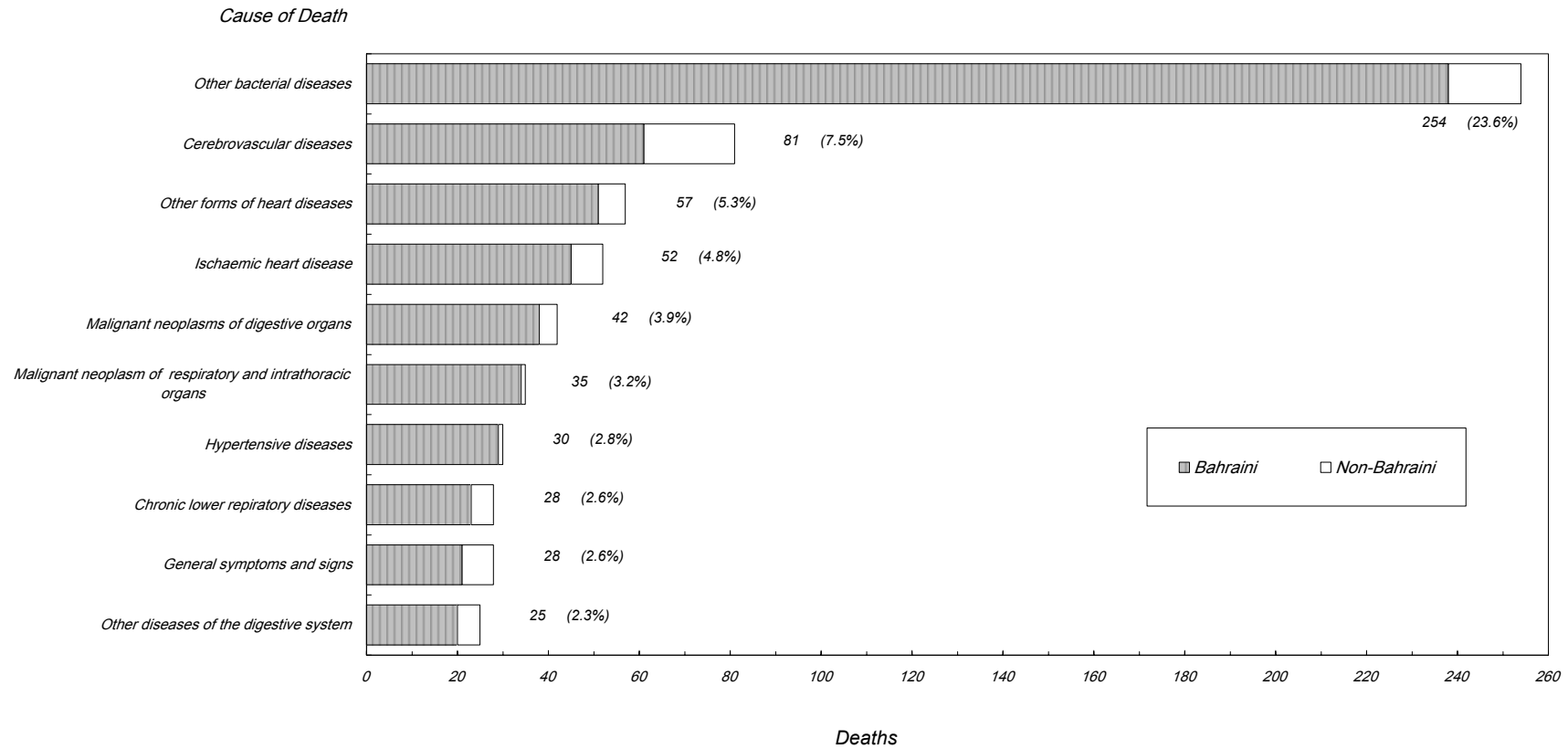
Cause of Death	Total			48 hrs & over			48 Less than 48 hrs			Sex	ICD10 Code
	Total	Non-Bah	Bah	Total	Non-Bah	Bah	Total	Non-Bah	Bah		
Other diseases of intestines	4	1	3	4	1	3	-	-	-	Male	K55-K63
	3	-	3	3	-	3	-	-	-	Female	
	7	1	6	7	1	6	-	-	-	Total	
Diseases of peritoneum	1	1	-	1	1	-	-	-	-	Male	K65-K67
	-	-	-	-	-	-	-	-	-	Female	
	1	1	-	1	1	-	-	-	-	Total	
Diseases of liver	10	1	9	9	1	8	1	-	1	Male	K70-K77
	6	-	6	6	-	6	-	-	-	Female	
	16	1	15	15	1	14	1	-	1	Total	
Disorders of gallbladder, biliary tract and pancreas	3	-	3	3	-	3	-	-	-	Male	K80-K87
	4	-	4	3	-	3	1	-	1	Female	
	7	-	7	6	-	6	1	-	1	Total	
Other diseases of the digestive system	14	4	10	10	1	9	4	3	1	Male	K90-K93
	11	1	10	8	-	8	3	1	2	Female	
	25	5	20	18	1	17	7	4	3	Total	
Other disorders of the skin and subcutaneous tissue	-	-	-	-	-	-	-	-	-	Male	L80-L99
	1	-	1	1	-	1	-	-	-	Female	
	1	-	1	1	-	1	-	-	-	Total	
Arthropathies	1	-	1	1	-	1	-	-	-	Male	M00-M25
	-	-	-	-	-	-	-	-	-	Female	
	1	-	1	1	-	1	-	-	-	Total	
Renal failure	13	-	13	13	-	13	-	-	-	Male	N17-N19
	9	-	9	8	-	8	1	-	1	Female	
	22	-	22	21	-	21	1	-	1	Total	
Complications of labour and delivery	-	-	-	-	-	-	-	-	-	Male	O60-O75
	1	-	1	1	-	1	-	-	-	Female	
	1	-	1	1	-	1	-	-	-	Total	
Other obstetric conditions, not elsewhere classified	-	-	-	-	-	-	-	-	-	Male	O95-O99
	1	-	1	-	-	-	1	-	1	Female	
	1	-	1	-	-	-	1	-	1	Total	

Cause of Death	Total			48 48 hrs & over			48 Less than 48 hrs			Sex	ICD10 Code
	Total	Non-Bah	Bah	Total	Non-Bah	Bah	Total	Non-Bah	Bah		
	Disorders related to length of gestation and fetal growth	12	5	7	4	2	2	8	3		
	12	1	11	5	1	4	7	-	7	Female	
	24	6	18	9	3	6	15	3	12	Total	
Respiratory and cardiovascular disorders specific to the perinatal period	7	1	6	4	1	3	3	-	3	Male	P20-P29
	8	1	7	6	1	5	2	-	2	Female	
	15	2	13	10	2	8	5	-	5	Total	
Infections specific to the perinatal period	2	-	2	2	-	2	-	-	-	Male	P35-P39
	6	-	6	5	-	5	1	-	1	Female	
	8	-	8	7	-	7	1	-	1	Total	
Haemorrhagic and haematological disorders of fetus and newborn	6	1	5	4	1	3	2	-	2	Male	P50-P61
	2	1	1	2	1	1	-	-	-	Female	
	8	2	6	6	2	4	2	-	2	Total	
Digestive system disorders of fetus and newborn	2	-	2	2	-	2	-	-	-	Male	P75-P78
	1	-	1	-	-	-	1	-	1	Female	
	3	-	3	2	-	2	1	-	1	Total	
Other disorders originating in the perinatal period	-	-	-	-	-	-	-	-	-	Male	P90-P96
	1	1	-	1	1	-	-	-	-	Female	
	1	1	-	1	1	-	-	-	-	Total	
Congenital malformations of the nervous system	1	-	1	1	-	1	-	-	-	Male	Q00-Q07
	-	-	-	-	-	-	-	-	-	Female	
	1	-	1	1	-	1	-	-	-	Total	
Congenital malformations of the circulatory system	1	-	1	1	-	1	-	-	-	Male	Q20-Q28
	1	-	1	-	-	-	1	-	1	Female	
	2	-	2	1	-	1	1	-	1	Total	
Congenital malformations of the respiratory system	-	-	-	-	-	-	-	-	-	Male	Q30-Q34
	1	-	1	1	-	1	-	-	-	Female	
	1	-	1	1	-	1	-	-	-	Total	
Other congenital malformations of the digestive system	1	-	1	-	-	-	1	-	1	Male	Q38-Q45
	-	-	-	-	-	-	-	-	-	Female	
	1	-	1	-	-	-	1	-	1	Total	

Cause of Death	Total			48 hrs & over			48 Less than 48 hrs			Sex	ICD10 Code
	Total	Non-Bah	Bah	Total	Non-Bah	Bah	Total	Non-Bah	Bah		
Congenital malformations of the urinary system	3	1	2	-	-	-	3	1	2	Male	Q60-Q64
	1	1	-	-	-	-	1	1	-	Female	
	4	2	2	-	-	-	4	2	2	Total	
Other congenital malformations	2	-	2	-	-	-	2	-	2	Male	Q80-Q89
	1	-	1	-	-	-	1	-	1	Female	
	3	-	3	-	-	-	3	-	3	Total	
Chromosomal abnormalities, not elsewhere classified	1	-	1	1	-	1	-	-	-	Male	Q90-Q99
	4	-	4	2	-	2	2	-	2	Female	
	5	-	5	3	-	3	2	-	2	Total	
Symptoms and signs involving the circulatory and respiratory systems	5	-	5	5	-	5	-	-	-	Male	R00-R09
	7	-	7	7	-	7	-	-	-	Female	
	12	-	12	12	-	12	-	-	-	Total	
Symptoms and signs involving the digestive system and abdomen	1	1	-	1	1	-	-	-	-	Male	R10-R19
	2	-	2	1	-	1	1	-	1	Female	
	3	1	2	2	1	1	1	-	1	Total	
Symptoms and signs involving the skin and subcutaneous tissue	1	-	1	1	-	1	-	-	-	Male	R20-R23
	-	-	-	-	-	-	-	-	-	Female	
	1	-	1	1	-	1	-	-	-	Total	
General symptoms and signs	18	5	13	15	4	11	3	1	2	Male	R50-R69
	10	2	8	7	2	5	3	-	3	Female	
	28	7	21	22	6	16	6	1	5	Total	
Injuries to the head	13	7	6	11	5	6	2	2	-	Male	S00-S09
	5	1	4	3	-	3	2	1	1	Female	
	18	8	10	14	5	9	4	3	1	Total	
Injuries to the neck	1	1	-	1	1	-	-	-	-	Male	S10-S19
	-	-	-	-	-	-	-	-	-	Female	
	1	1	-	1	1	-	-	-	-	Total	
Injuries to the hip and thigh	1	-	1	1	-	1	-	-	-	Male	S70-S79
	-	-	-	-	-	-	-	-	-	Female	
	1	-	1	1	-	1	-	-	-	Total	

Cause of Death	Total			48 hrs & over			48 Less than 48 hrs			Sex	ICD10 Code
	Total	Non-Bah	Bah	Total	Non-Bah	Bah	Total	Non-Bah	Bah		
Effects of foreign body entering through natural orifice	-	-	-	-	-	-	-	-	-	- Male	T15-T19
	1	-	1	1	-	1	-	-	-	- Female	
	1	-	1	1	-	1	-	-	-	- Total	
Burns and corrosions of multiple and unspecified body regions	1	1	-	1	1	-	-	-	-	- Male	T29-T32
	1	1	-	1	1	-	-	-	-	- Female	
	2	2	-	2	2	-	-	-	-	- Total	
Poisoning by drugs, medicaments and biological substances	2	-	2	1	-	1	1	-	1	1 Male	T36-T50
	1	-	1	1	-	1	-	-	-	- Female	
	3	-	3	2	-	2	1	-	1	1 Total	
Toxic effects of substances chiefly nonmedicinal as to source	1	-	1	-	-	-	1	-	1	1 Male	T51-T65
	-	-	-	-	-	-	-	-	-	- Female	
	1	-	1	-	-	-	1	-	1	1 Total	
Complications of surgical and medical care, not elsewhere classified	1	-	1	1	-	1	-	-	-	- Male	T80-T88
	4	-	4	4	-	4	-	-	-	- Female	
	5	-	5	5	-	5	-	-	-	- Total	
Persons encountering health services for specific procedures and health care	1	-	1	1	-	1	-	-	-	- Male	Z40-Z54
	-	-	-	-	-	-	-	-	-	- Female	
	1	-	1	1	-	1	-	-	-	- Total	
Persons with potential health hazards related to family and personal history and certain conditions influencing health status	1	-	1	1	-	1	-	-	-	- Male	Z80-Z99
	-	-	-	-	-	-	-	-	-	- Female	
	1	-	1	1	-	1	-	-	-	- Total	
Total	566	93	473	458	70	388	108	23	85	Male	
	512	40	472	431	34	397	81	6	75	Female	
	1,078	133	945	889	104	785	189	29	160	Total	

2003
Deaths by Cause of Death 2003



Refer: Table 9.17

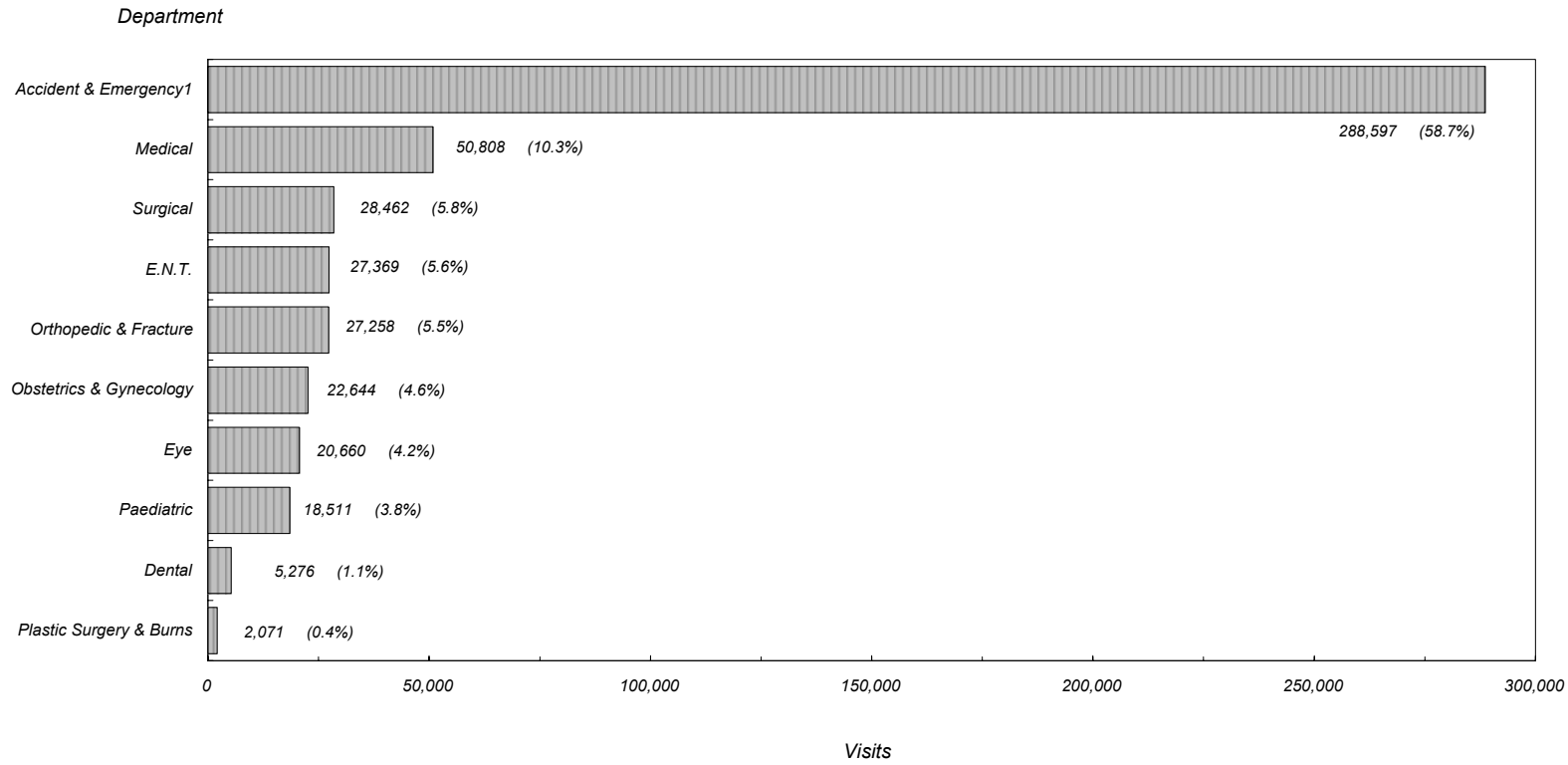
9.17 :

<i>Department / Clinic</i>	<i>2003</i>	<i>2002</i>	<i>2001</i>	<i>2000</i>	<i>1999</i>	<i>/</i>
Accident & Emergency ¹	288,597	268,578	252,878	234,306	208,861	1
A&E Clinic	288,597	268,578	216,384	163,684	...	
Triage Room	NA	NA	36,494	70,622	...	
Out-Patient Clinic	203,059	183,590	195,620	185,785	183,444	
Medical	50,808	42,110	41,004	37,711	38,284	
Surgical	28,462	29,308	29,409	24,965	25,588	
Orthopedic & Fracture	27,258	23,549	23,162	18,532	18,032	
Plastic Surgery & Burns	2,071	2,216	2,578	2,076	2,261	
Eye	20,660	17,069	21,122	24,751	27,740	
E.N.T.	27,369	21,598	24,353	25,764	24,710	
Paediatric	18,511	17,267	17,726	16,239	16,504	
Obstetrics & Gynecology	22,644	25,230	30,886	30,169	24,200	
Gynecology	11,924	11,850	12,560	11,854	10,544	
Antenatal	10,720	13,380	18,300	18,124	13,144	
Postnatal	-	-	26	191	512	
Dental	5,276	5,243	5,380	5,578	6,125	
Total	491,656	452,168	448,498	420,091	392,305	
Other Services						
Physiotherapy (SMC)*	12,895	14,512	105,081	132,272	127,089	* ()
Occupational Therapy	7,811	7,928	6,357	8,965	8,156	
Day Case Unit	7,089	7,422	6,444	6,322	6,930	

¹ The separation of number of the Triage patients from A&E clinic started in 2000 .

* Refer to Conventions used in the report .

2003
Out-Patient Visits by Department 2003



Refer: Table 9.18

9.18 :

Source of Specimen	Total	Parasitology	Serology	Bacteriology	Cytology	Histology	FNAC	Blood Bank	Haematology	Biochemistry	
Salmaniya Medical Complex	3,859,455	125,555	32,523	412,196	2,712	8,819	1,190	361,703	1,208,928	1,705,829	
Limited Private Practice	13,682	114	297	3,542	222	13	7	1,161	4,405	3,921	
Maternity Hospitals	49,087	170	1,306	16,712	549	58	3	1,837	5,816	22,636	
Psychiatric Hospital	31,249	747	628	1,154	1	2	3	95	10,476	18,143	
Health Centers *	643,597	530	23,676	194,283	5,540	55	3	8,535	26,411	384,564	*
Medical Commission	1,601	-	3	-	-	-	-	-	-	1,598	
Public Health	1,980	43	32	180	2	-	-	147	480	1,096	
College of Health Sciences	670	4	-	60	-	-	-	1	288	317	
B . D . F. Hospital	908	3	74	120	2	1	1	26	75	606	
Directorate of Health and Social Welfare **	6,937	52	202	3,956	103	2	-	1	1,037	1,584	**
Private Hospitals	2,890	1	11	10	4	3	9	2,082	69	701	
Private Clinics	2,271	77	80	196	17	17	92	5	475	1,312	
Private Companies	5,092	421	81	82	3	-	-	31	2,585	1,889	
Others	451	-	-	48	-	-	-	-	-	403	
Total	4,619,870	127,717	58,913	632,539	9,155	8,970	1,308	375,624	1,261,045	2,144,599	

* Excluding Al Razi Health Center which is specifically provided for labour Force / Workers .

** DHSW : previously named as Public Security Health Center .

*

**

Radiology Procedure	Total	¹ LPP¹	SMC	Accident & Emergency
Skull	10,863	534	5,565	4,764
Ultrasound	21,796	1,477	20,319	-
Spines (All Views)	13,905	1,437	7,034	5,434
Extremities & Joints	70,307	1,678	37,024	31,605
Chest (All Views)	38,722	1,146	19,044	18,532
Abdomen	12,209	83	4,424	7,702
Mammography	2,969	418	2,551	-
Hysterosalpingogram	394	118	276	-
I.V.U (All G.U.)	2,349	212	2,137	-
Barium Swallow & Barium Meal	2,335	218	2,117	-
Small Bowel Meal	71	9	62	-
Ultrasound portable	329	-	329	-
Barium Enema	888	103	785	-
Fluoroscopy	91	-	91	-
Sinogram (Fistulogram)	31	4	27	-
Sialogram	58	5	53	-
Dacrocystogram	87	6	81	-
Ultrasound Guided Biopsy	90	1	89	- ()
Myelogram	20	-	20	-
Angiogram	389	6	383	-
Venogram	213	1	212	-
Arthrogram	1	-	1	-
Skeletal Survey	36	-	36	-
C.T. Head, Neck	4,138	91	4,047	-
C.T. Chest and Mediastinum	723	22	701	-
C.T. Abdomen and pelvic	1,860	48	1,812	-
C.T. extremity & all others CT	283	8	275	-

Radiology Procedure	Total	¹ LPP¹	SMC	Accident & Emergency	
E.S.W.L.	353	-	353	-	
E.R.C.P.	109	-	109	-	
P.C.N.L.	2	-	2	-	
Mobiles (Ward Radiography)	12,624	-	9,065	3,559	
RNI	1,649	65	1,584	-	
Magnetic Resonance Imaging (MRI)	3,541	340	3,201	-	
Bone Mineral Densitometry (BMD)	1,936	620	1,316	-	
OPG	2,061	819	1,159	83	
Transscan TS2000	2	1	1	-	(2000)
C.T. angiogram	7	-	7	-	
Operation Theater	1,902	-	1,902	-	
Copy	458	1	457	-	
Percutaneous Transhepatic Cholangiogram (PTC)	12	-	12	-	
Unclassified	7	-	7	-	
Total	209,820	9,471	128,670	71,679	
Interrupted	129	12	117	-	
Grand Total	209,949	9,483	128,787	71,679	

¹ LPP: Limited private practice. That is, private practice carried out by government physicians /SMC .

: () ¹

Month	Total				Dead				Alive			
	Total		Female	Male	Total		Female	Male	Total		Female	Male
	%	No.			%	No.			%	No.		
January	7.1	70	34	36	9.3	7	4	3	6.9	63	30	33
February	6.7	66	32	34	10.7	8	5	3	6.4	58	27	31
March	9.4	92	37	55	6.7	5	1	4	9.6	87	36	51
April	7.6	75	32	43	8.0	6	2	4	7.6	69	30	39
May	8.4	82	36	46	9.3	7	4	3	8.3	75	32	43
June	8.1	80	39	41	4.0	3	1	2	8.5	77	38	39
July	8.1	80	41	39	8.0	6	4	2	8.2	74	37	37
August	8.6	84	31	53	8.0	6	1	5	8.6	78	30	48
September	8.6	84	35	49	6.7	5	2	3	8.7	79	33	46
October	10.2	100	44	56	13.3	10	5	5	9.9	90	39	51
November	8.2	81	32	49	5.3	4	2	2	8.5	77	30	47
December	9.0	88	36	52	10.7	8	4	4	8.8	80	32	48
Total	100.0	982	429	553	100.0	75	35	40	100.0	907	394	513

Region	Discharges					
	Babies at Special Care Baby Unit				Mothers	
	Total		Female	Male	Total	
	%	No.			%	No.
Hidd	2.4	24	12	12	1.7	168
Muharraq	15.4	151	71	80	14.1	1,400
Manama	20.7	203	82	121	22.2	2,202
Jidhafs	9.2	90	33	57	8.7	860
Northern Region	6.1	60	23	37	6.3	626
Sitra	10.2	100	49	51	9.6	956
Central Region	10.0	98	47	51	9.2	914
Isa Town	6.6	65	26	39	8.2	810
Riffa	7.0	69	29	40	6.9	685
Western Region	4.9	48	28	20	5.3	529
Southern	0.4	4	2	2	0.1	9
Hamad Town	6.9	68	27	41	7.4	734
Undetermined	0.2	2	-	2	-	17
Total	100.0	982	429	553	100	9,910